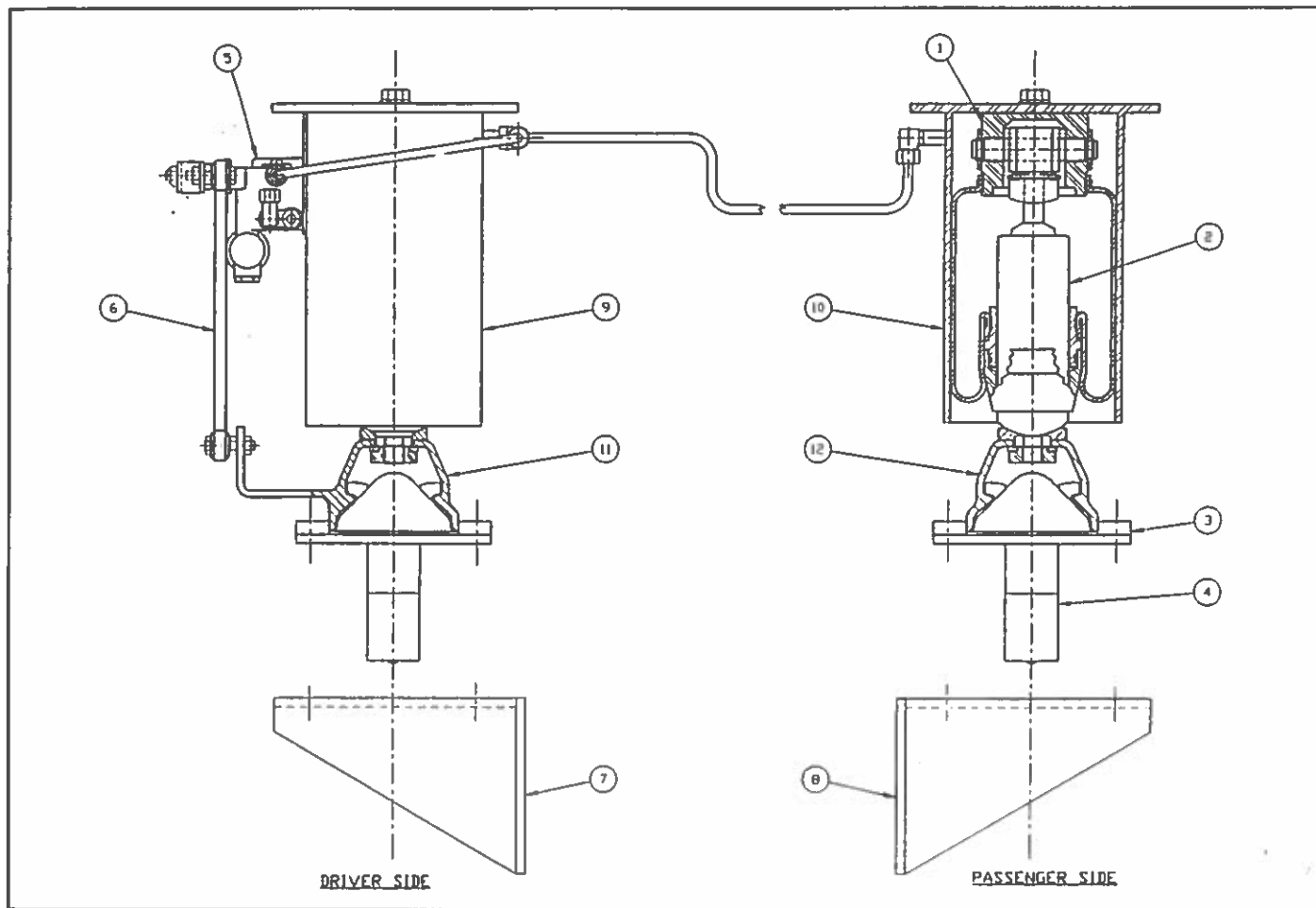


Typical CabCushion™ Layout

CabCushion was designed to be easily serviced. All suspension systems use the same Air Spring - Shock Absorber and share many other components (see part #'s below). For replacement parts that are custom to your vehicle, please call our Customer Service department at 800-745-4142.



CabCushion Replacement Parts

1,2	Air Spring/Shock assembly	KA5040	5	Air leveling valve kit	KA5029
1	Air Spring only	KA5051	6	Linkage	Call for part #
2	Shock Absorber only	DA701.900	7	Frame bracket, driver side	Call for part #
11	Base, driver side**	DA4084.900	8	Frame bracket, pass side	Call for part #
12	Base, passenger side**	DA3695.804	9	Cab bracket, driver side	Call for part #
3,4	Latch & Cylinder assembly	Call for part #	10	Cab bracket, Pass side	Call for part #
3	Latch plate only	Call for part #	13	Shift tower gasket (optional)	Call for part #
4	Cylinder only	Call for part #			

** Kenworth, Freightliner, Navistar 4070, Navistar 9670 w/ sleeper, and Peterbilt 352 use special base - call for part #

For Customer Service, call Power-Packer at 1-800-745-4142.

CabCushion™ is a registered trademark of Power-Packer Cab Suspension Systems