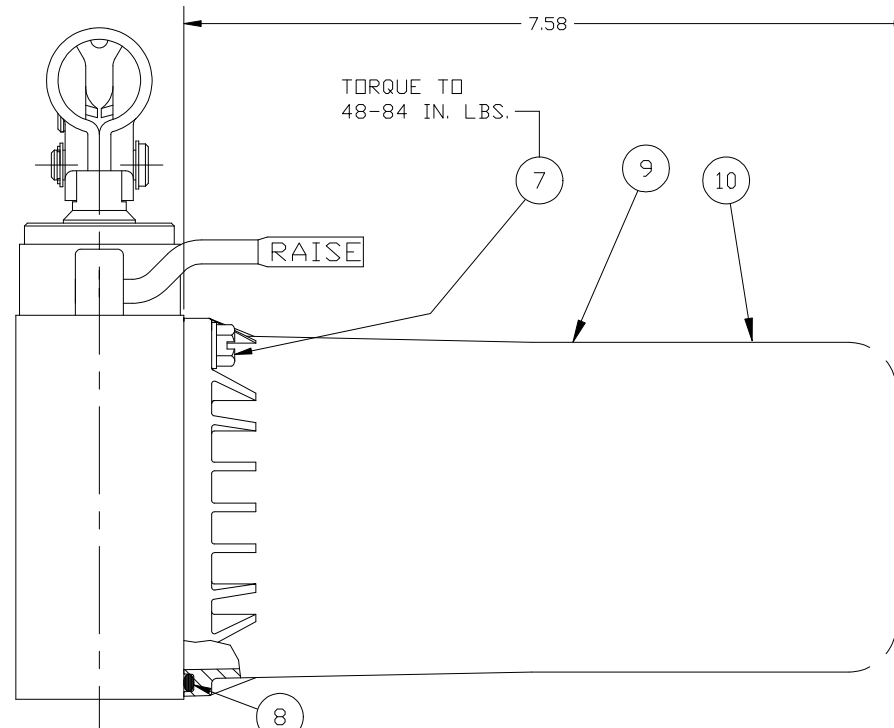
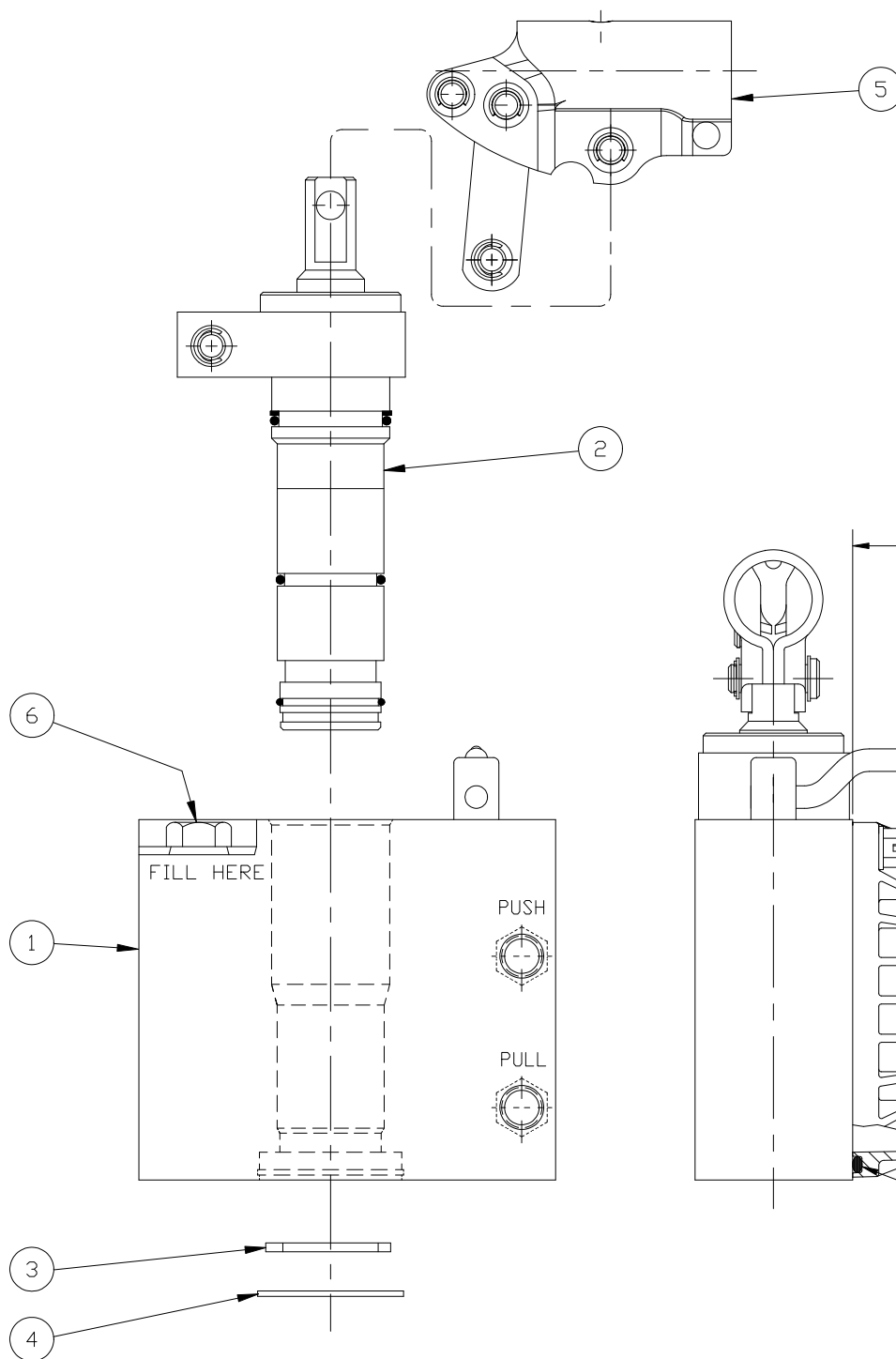


ITEM	SERVICE KIT	REQ'D NO.	DESCRIPTION
1	NOT SERVICED		PUMP BODY ASSEMBLY
2,3,4	KH5025	1	CYLINDER-INSERT ASSEMBLY
5	KH5027	1	BEAM-LINK ASSEMBLY
6	PP757900	1	FILL PLUG
9	PP2862.026	1	DECAL, WARNING
7,8,9,10	KH5029	1	RESERVOIR - LARGE

NOTE:  
ITEM 2 IS SUPPLIED FULLY ASSEMBLED,  
FACTORY TESTED, READY FOR INSTALLATION.



REVISED BEAM,  
PINS & CLIPS  
ECO 10-014-8 JJH  
04/17/12  
RELEASED TO PRODUCTION  
ECO 31440 10/29/98 TRD

SYMBOL:		SPECIFICATIONS		DIMENSIONS IN BRACKETS ARE IN [MM]	
KEY PRODUCT CHARACTERISTICS (KPC) ◇ KPC(S): QTY.(0)    ▽ SERIALIZED DIMENSIONS ◆ KPC SAFETY: QTY.(0)    ▲ CHANGE TRIANGLE ○ BOM BALLOON: (3/8" Ø) NATIVE GEOMETRY: <input type="checkbox"/> PRO/E: <input type="checkbox"/> CATIA: <input checked="" type="checkbox"/> ACAD: <input type="checkbox"/> OTHER:		MAT'L.: REMOVE ALL BURRS SPEC3 SPEC4 DRAWING STANDARDS per ASME Y14.5M-1994 WHERE USED (REF): HP50037203 DGS FILE: 013724.dwg DRG. SIZE: C		125 <input checked="" type="checkbox"/> FINISH UNLESS SPECIFIED Ra μm [Rz μm m] ALL ANGULAR DIMENSIONS ARE ±1° UNLESS SPECIFIED SCALE: FULL DO NOT SCALE DR. TRD: DATE CH. DATE APP'D. DATE	
				TITLE: SERVICE DRAWING HP50037203 PSD129	