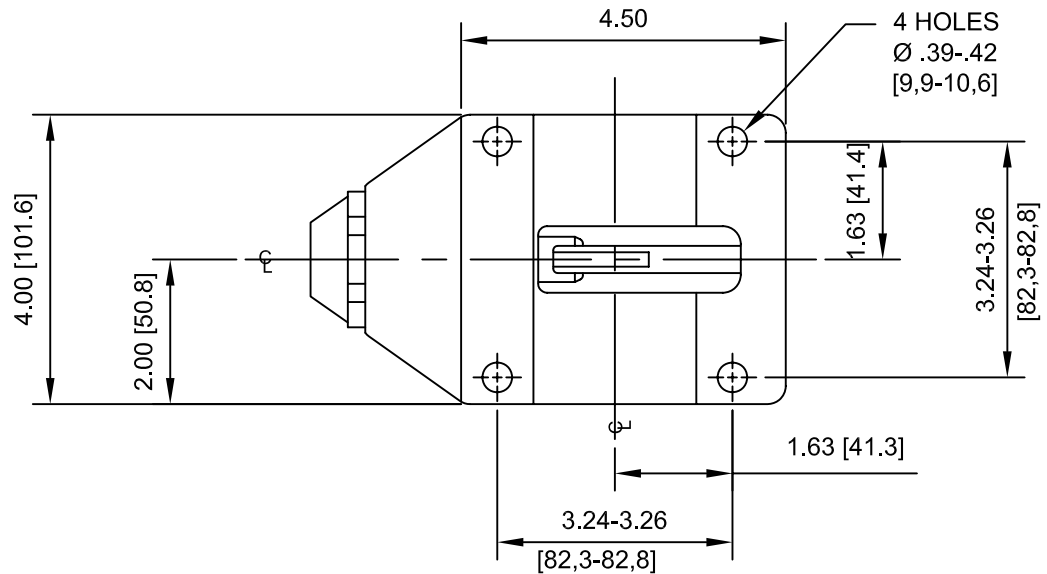
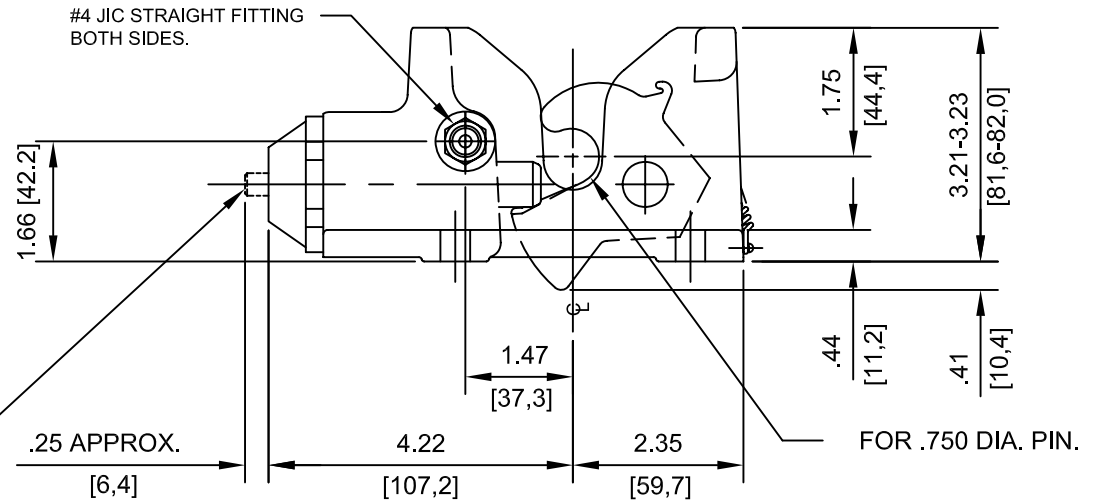


VISUAL "LATCH ENGAGED" INDICATOR. INDICATOR TO BE BELOW SURFACE WHEN LATCH IS ENGAGED. PIN PROTRUDES BY AMOUNT SHOWN WHEN LATCH IS OPEN. LATCH IS SHOWN IN THE "ENGAGED" OR CLOSED POSITION.



SPECIFICATIONS:

- OPERATING PRESSURE TO OPEN LATCH: 200-300 PSI [13,8-20,7 BAR]
- OPERATING PRESSURE MAX. 5000 PSI [345 BAR]
- RECOMMENDED HYDRAULIC FLUID; PER MIL-5606 OR EQUIV.
- RECOMMENDED TEMP. RANGE: -30°F TO 130°F [-34°C TO 54°C]
- MAX. TORQUE ON .437-20 SAE FITTING: 10-12 FT.LBS.
- LATCH TO HAVE A MIN. ULTIMATE TENSILE STRENGTH OF 10,000 LBS. [44,5 kN]
- MIN. CORROSION PROTECTION: 200 HRS. SALT SPRAY PER ASTM B117.
- WEIGHT: 3.4 LBS. [1,5 kg]

| | | | | | | |
|---|---------------------------|----------------------|---|--------------------|---|--|
| DESCRIPTION LATCH ASM HYD VISUAL INCICATOR W/ CATCH & FITTINGS | | REV | DATE | BY | ECD # | POWER-PACKER <small>AN ACTUANT COMPANY</small> |
| MATERIAL | | 01 | 01/23/09 | DA | 09411632 | |
| SIZE C | PROJECTION FIRST ANGLE | REVISION CRITICAL | TOLERANCES UNLESS OTHERWISE SPECIFIED: X .1 XX .03 XXX .015 EDGES R25/R30 | | THIS DOCUMENT AND THE INFORMATION CONTAINED HEREIN IS THE SOLE PROPERTY OF ACTUANT AND ITS SUBSIDIARIES. IT CONTAINS PROPRIETARY INFORMATION WHICH IS CONFIDENTIAL. ANY USE OR REPRODUCTION OF THIS DRAWING WITHOUT AUTHORIZATION FROM ACTUANT OR ITS SUBSIDIARY MAY WARRANT LEGAL ACTION AGAINST THE USER. | |
| DO NOT SCALE | LEGEND | TOTAL NO. OF USED | DATE: 3/21/06 | DRAWN: DK | ESR: | PART NUMBER LH50000111 |
| | | | SCALE: 1:2 | UNITS: INCHES [mm] | SHEET 1 OF 2 | REV. 0D |

