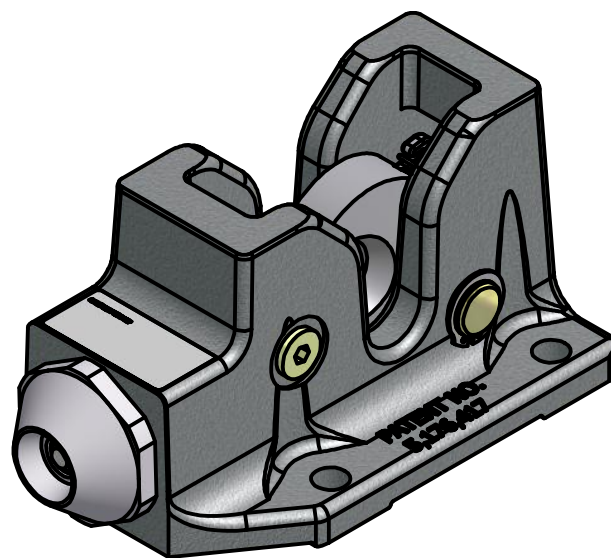


ANY PROTRUSION OF VISUAL INDICATOR PIN PAST THIS SURFACE THE LATCH IS CONSIDERED TO BE NOT ENGAGED. WHEN THE VISUAL INDICATOR PIN IS FLUSH OR SUB-FLUSH TO THIS SURFACE THE LATCH IS CONSIDERED FULLY ENGAGED.



SCALE 1 / 2

SPECIFICATIONS:

OPERATING PRESSURE TO OPEN LATCH:

200-300 PSI [13,8-20,7 BAR]

OPERATING PRESURE MAX: 5000 PSI [345 BAR]

RECOMMENDED HYDRAULIC FLUID: PER MIL-PRF-5606H OR EQUIV.

RECOMMENDED TEMP RANGE: -30°F TO 130°F [-34°C TO 54°C]

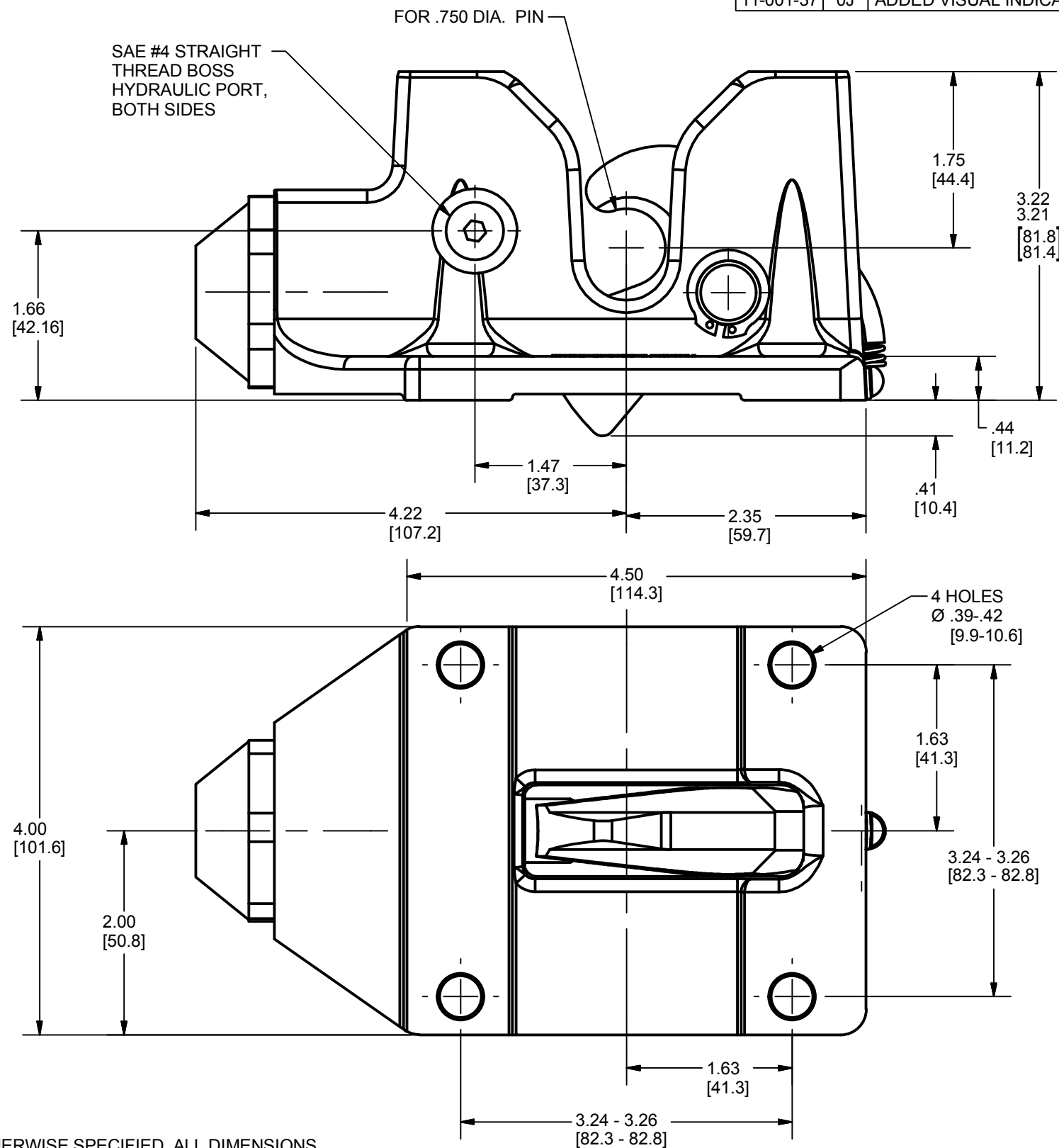
MAX TORQUE ON 7/16-20 SAE #4 FITTING: 10-12 FT. LBS.

LATCH MIN. PULL STRENGTH: 10,000 LBS.

MIN CORROSION PROTECTION: 200 HRS. SALT SPRAY PER ASTM B117

WEIGHT: 3.4 LBS. [1,5 KG]

SHIPPED CONDITION: LATCHED POSITION.



UNLESS OTHERWISE SPECIFIED, ALL DIMENSIONS ARE NOMINAL AND MAY VARY DUE TO MANUFACTURING TOLERANCES AND ASSEMBLY TOLERANCE STACK-UP.

REVISION HISTORY			
ECO	REV	DESCRIPTION	DATE
11-001-37	0J	ADDED VISUAL INDICATION NOTE	11/30/11

DO NOT SCALE	DESCRIPTION LATCH ASM HYD VISUAL INDICATOR				REV	DATE	BY	ECO #	POWER - PACKER AN <i>Actuant</i> COMPANY			
	MATERIAL				0H	01/20/09	JAL	09-0163-2				
	SIZE				0J	3/18/11	LW	11-001-37				
	PROJECTION				DRAWN: DK DATE: 6/28/2005							
LEGEND				PART NUMBER LH50000104				REV. 0J				
TOLERANCES UNLESS OTHERWISE SPECIFIED .X ± .1 .XX ± .03 .XXX ± .015 ANGLE ± 1°				THIS DOCUMENT AND THE INFORMATION CONTAINED HEREIN IS THE SOLE PROPERTY OF ACTUANT AND ITS SUBSIDIARIES. IT CONTAINS PROPRIETARY INFORMATION, WHICH IS CONFIDENTIAL. ANY USE OR REPRODUCTION OF THIS DRAWING WITHOUT AUTHORIZATION FROM ACTUANT OR ITS SUBSIDIARY MAY WARRANT LEGAL ACTION AGAINST THE USER.				ESR:		SCALE: 3/4	UNITS: INCHES [mm]	SHEET 1 OF 1