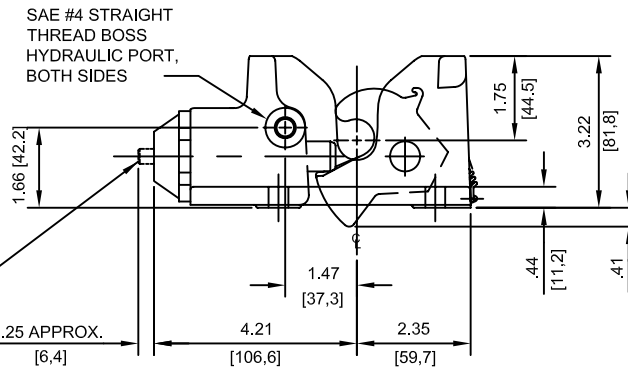
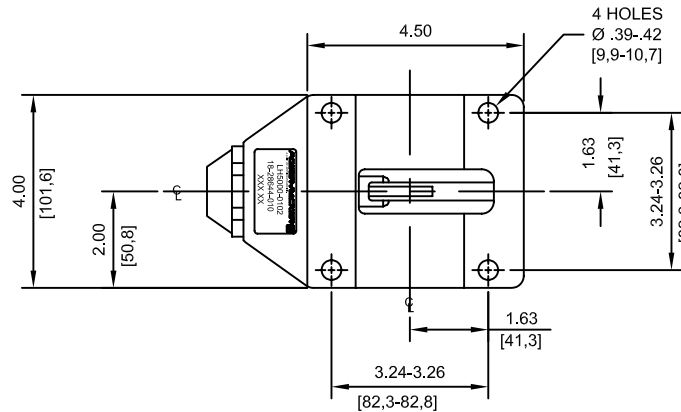


VISUAL "LATCH ENGAGED" INDICATOR. INDICATOR TO BE BELOW SURFACE WHEN LATCH IS ENGAGED. PIN PROTRUDES BY AMOUNT SHOWN WHEN LATCH IS OPEN. LATCH IS SHOWN IN THE "ENGAGED" OR CLOSED POSITION.



ROTOR DOES NOT PROTRUDE BELOW HOUSING WHEN LATCH IS "OPEN".



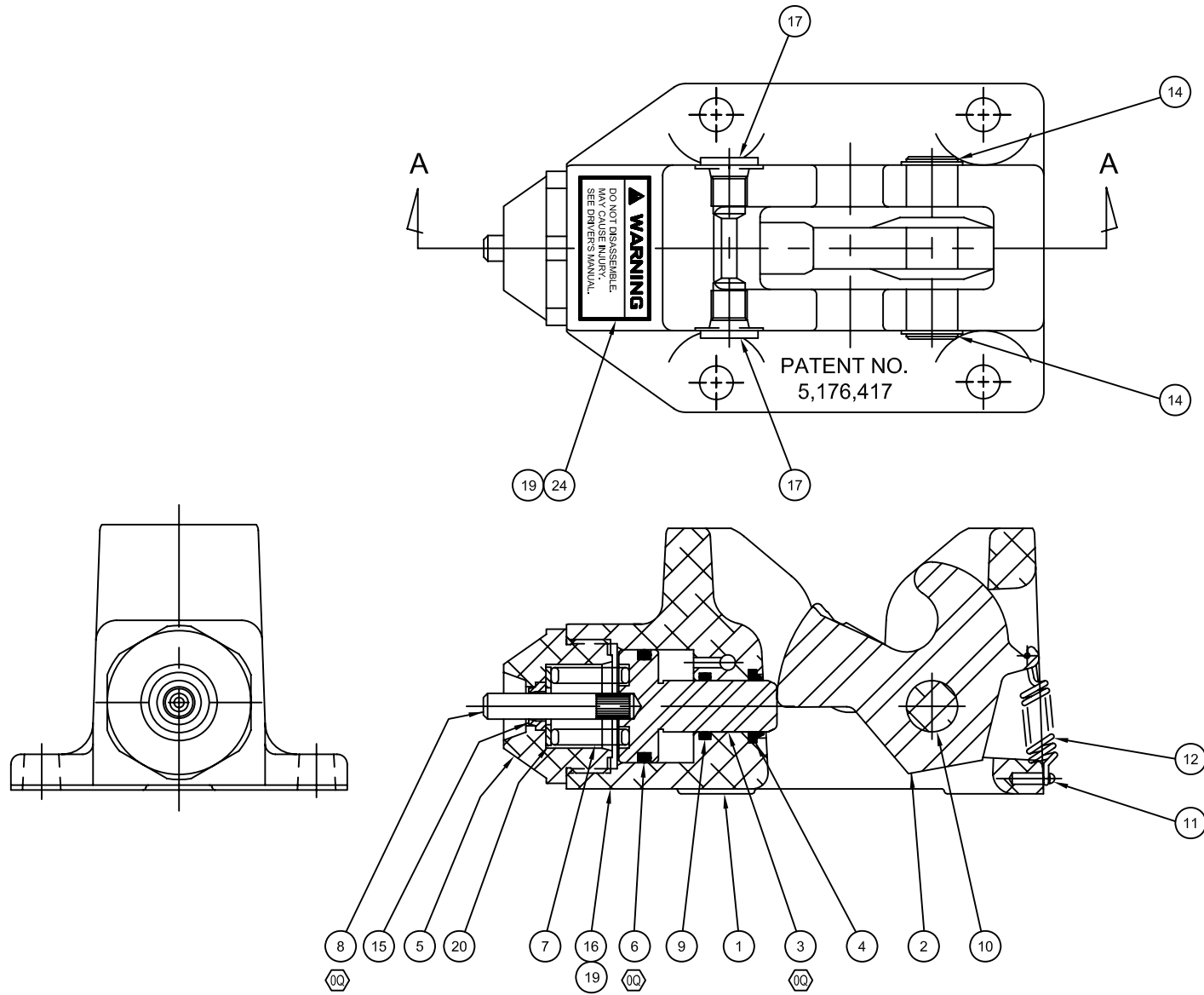
FREIGHTLINER PART NO. 18-28644-010

SPECIFICATIONS:

- MAX. VERTICAL PULL LOAD — 10,000 LBS. [4536 KG]
 - MAX. HYDRAULIC PRESSURE — 5,000 PSI [344,7 BARS]
 - RECOMMENDED FLUID — PER MIL-H-5606 OR EQUIVALENT
 - RECOMMENDED TEMP. RANGE — -30°F TO 130°F [-34°C TO 54°C]
 - CORROSION RESISTANCE — 200 HRS. PER B1117
 - WEIGHT — 3.4 LBS. [1,5 KG]
- LATCH TO BE SHIPPED IN THE "OPEN" POSITION.

DESCRIPTION LATCH ASM HYD VISUAL INDICATOR OPEN FREIGHTLINER				REV	DATE	BY	ECD #	POWER-PACKER <small>AN ACTUANT COMPANY</small>
MATERIAL				02	01/20/09	DA	09-2163-2	
DO NOT SCALE	SIZE C	PROJECTION C	REVISION C	TOLERANCES (UNLESS OTHERWISE SPECIFIED) X .1 XX .03 XXX .015 EDGES .05X45°		THIS DOCUMENT AND THE INFORMATION CONTAINED HEREIN IS THE SOLE PROPERTY OF ACTUANT AND ITS SUBSIDIARIES. IT CONTAINS PROPRIETARY INFORMATION WHICH IS CONFIDENTIAL. ANY USE OR REPRODUCTION OF THIS DRAWING WITHOUT AUTHORIZATION FROM ACTUANT OR ITS SUBSIDIARY MAY WARRANT LEGAL ACTION AGAINST THE USER.		PART NUMBER LH50000102
LEGEND TOTAL NO. OF USED				DRAWN: DK DATE: 6/26/06		REV. 0Q		ESR: SCALE: 1:2 UNITS: INCHES [mm] SHEET 1 OF 2

ITEM	PART NUMBER	QTY	DESCRIPTION
1	PP732001	1	LATCH HOUSING
2	PP110257	1	ROTOR
3	1010001834	1	PISTON ASM LH5000 VISUAL IND.
4	PP779776	1	WIPER
5	PP978020	1	STOP CAP
6			
7	PP113110	1	SPRING
8			
9	B1114803	1	O-RING
10	PP116704	1	AXLE
11	PP798129	1	DRIVE SCREW
12	PP118710	1	EXTENSION SPRING
13			
14	PP119349	2	RETAINING RING
15	PP1009776	1	WIPER
16	PP180026	1	DECAL BLANK
17	A8053006	2	SAE SIZE #4 HEX SOCKET
18			
19	PP780026	1	DECAL MASK
20	PP768108	1	WASHER
24	PP797026	1	WARNING DECAL
ATSS11		A/R	TEST SPECIFICATION



SECTION A-A

NOTES:

1. TORQUE ITEM 5 TO 40-50 FT. LBS.
2. TORQUE ITEM 17 TO 10-12 FT. LBS.
3. AFTER TESTING, USING SAE TEST PLUG PP101.006, INSTALL ITEM 17.
4. PRINT "18-28644-010 & DATE CODE" ON ITEM 16. APPLY CLEAR LAMINATE AFTER PRINTING.
5. LATCH TO BE SHIPPED WITH ITEM 2 IN THE OPEN POSITION AS SHOWN.
6. LATCH TO BE SHIPPED WITH THE EXPOSED PORTION OF ITEM 8 MASKED BY ITEM 24.
7. ITEM 5 INSTALL WITH LOCKTITE 242 OR EQUIVALENT

DESCRIPTION LATCH ASM HYD VISUAL INDICATOR OPEN FREIGHTLINER		REV	DATE	BY	ECD #	POWER-PACKER <small>an ACTUANT COMPANY</small>
MATERIAL		02	01/20/09	DA	09-0163-2	
SIZE C	PROJECTION 	REVISION CRITICAL	TOLERANCES (UNLESS OTHERWISE SPECIFIED) X & .1 XX & .03 XXX & .015 EDGES R05/0.03		THIS DOCUMENT AND THE INFORMATION CONTAINED HEREIN IS THE SOLE PROPERTY OF ACTUANT AND ITS SUBSIDIARIES. IT CONTAINS PROPRIETARY INFORMATION WHICH IS CONFIDENTIAL. ANY USE OR REPRODUCTION OF THIS DRAWING WITHOUT AUTHORIZATION FROM ACTUANT OR ITS SUBSIDIARY MAY WARRANT LEGAL ACTION AGAINST THE USER.	
DO NOT SCALE	LEGEND 	TOTAL NO. OF USED	DATE: 6/26/06	SCALE: 1:1	UNITS: INCHES [mm]	REV. 00
DRAWN: DK			PART NUMBER: LH50000102		SHEET 2 OF 2	