

SPECIFICATIONS:

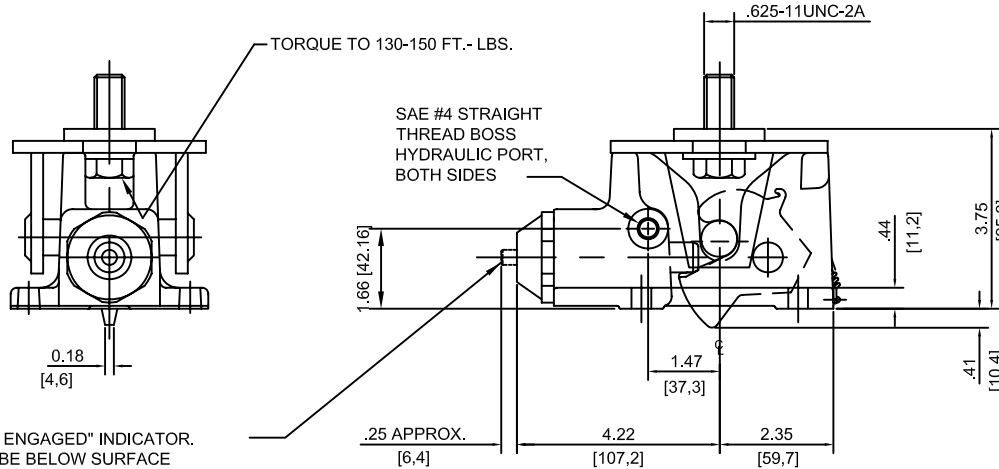
OPERATING PRESSURE TO OPEN LATCH:
200-300 PSI [13,8-20,7 BAR]

OPERATING PRESSURE MAX. 5000 PSI [345 BAR]
RECOMMENDED HYDRAULIC FLUID: PER MIL-5606 OR EQUIV.
RECOMMENDED TEMP. RANGE: -30°F TO 130°F [-34°C TO 54°C]

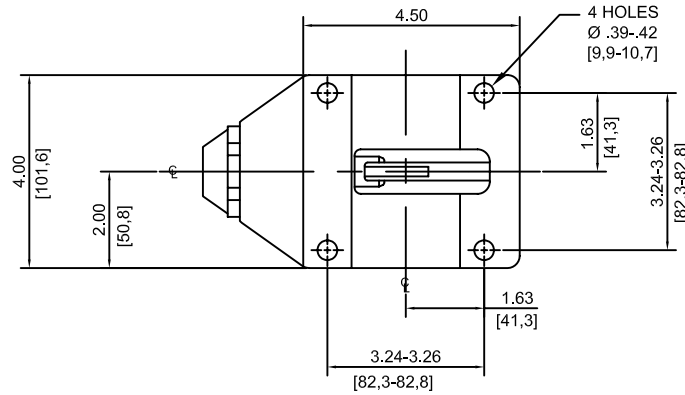
MAX. TORQUE ON .437-20 SAE FITTING: 10-12 FT.LBS.
LATCH TO HAVE A MIN. ULTIMATE TENSILE STRENGTH
OF 10000 LBS. [44,5 kN]

MIN. CORROSION PROTECTION: 200 HRS. SALT SPRAY
PER ASTM B117.

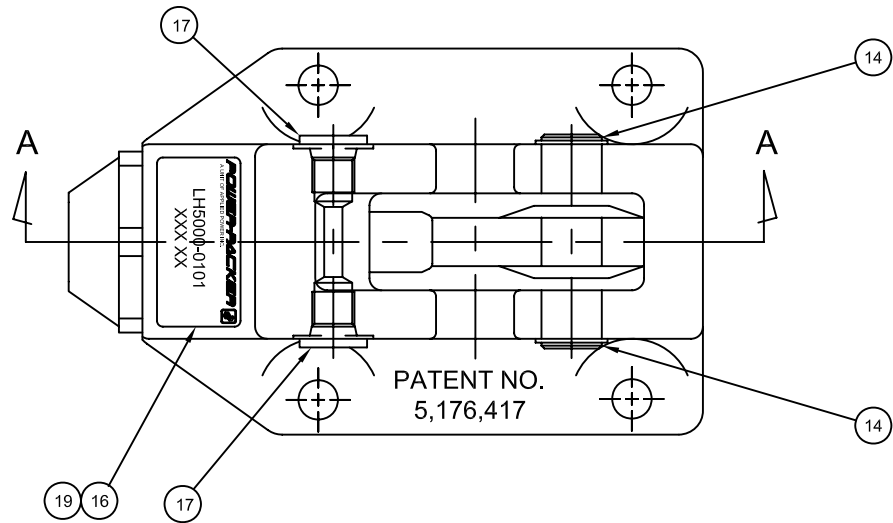
WEIGHT: 3.4 LBS. [1,5 kg]



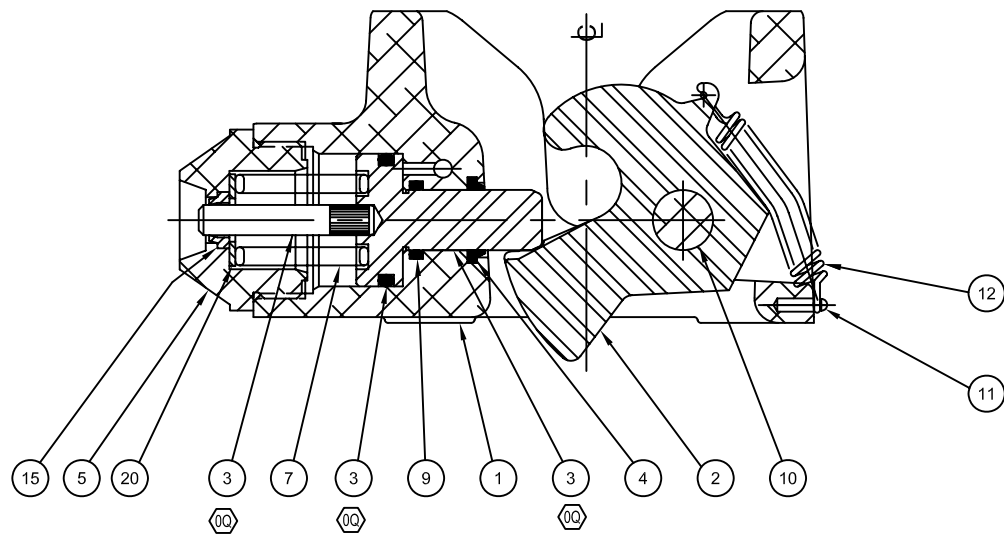
VISUAL "LATCH ENGAGED" INDICATOR.
INDICATOR TO BE BELOW SURFACE
WHEN LATCH IS ENGAGED. PIN PROTRUDES
BY AMOUNT SHOWN WHEN LATCH IS OPEN.
LATCH IS SHOWN IN THE "ENGAGED"
OR CLOSED POSITION.



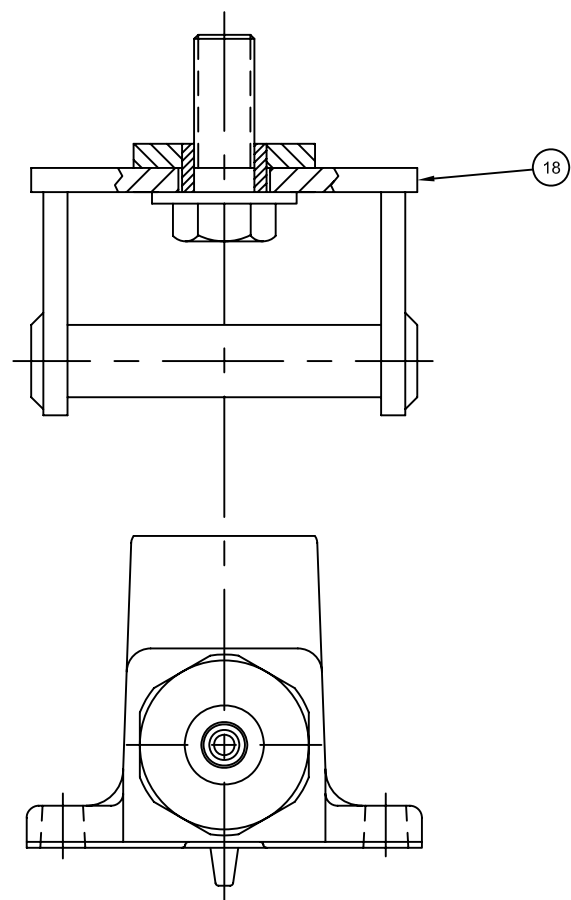
DESCRIPTION LATCH ASM HYD VISUAL INDICATOR W/ CATCH		REV	DATE	BY	ECD #	POWER-PACKER AN ACTUANT COMPANY
MATERIAL		02	01/20/09	DA	09-0163-2	
SIZE DO NOT SCALE	PROJECTION C	REVISION CRITICAL	TOLERANCES UNLESS OTHERWISE SPECIFIED: X .1 XX .03 XXX .015 EDGES R0.05/0.25		THIS DOCUMENT AND THE INFORMATION CONTAINED HEREIN IS THE SOLE PROPERTY OF ACTUANT AND ITS SUBSIDIARIES. IT CONTAINS PROPRIETARY INFORMATION WHICH IS CONFIDENTIAL. ANY USE OR REPRODUCTION OF THIS DRAWING WITHOUT AUTHORIZATION FROM ACTUANT OR ITS SUBSIDIARY MAY WARRANT LEGAL ACTION AGAINST THE USER.	
LEGEND	TOTAL NO. OF USED	SCALE: 1:2	DATE: 06/28/06	ESR:	UNITS: INCHES [mm]	REV. 0Q
DRAWN: DK			PART NUMBER		LH50000101	
SHEET 1			OF 2			



ITEM	PART NUMBER	QTY	DESCRIPTION
1	PP732001	1	LATCH HOUSING
2	PP110257	1	ROTOR
3	1010001834	1	PISTON ASM LH5000 VISUAL IND.
4	PP779776	1	WIPER
5	PP978020	1	STOP CAP
6			
7	PP113110	1	SPRING
8			
9	B1114803	1	O-RING
10	PP116704	1	AXLE
11	PP798129	1	DRIVE SCREW
12	PP118710	1	EXTENSION SPRING
13			
14	PP119349	2	RETAINING RING
15	PP1009776	1	WIPER
16	PP180026	1	DECAL BLANK
17	A8053006	2	SAE SIZE #4 HEX SOCKET
18	PP592900	1	LATCH ASSEMBLY
19	PP780026	1	DECAL MASK
20	PP768108	1	WASHER
ATS511		A/R	TEST SPECIFICATION



SECTION A-A



- NOTES:
- TORQUE ITEM 5 TO 40-50 FT. LBS.
 - TORQUE ITEM 17 TO 10-12 FT. LBS.
 - PRINT MODEL NO. AND DATE CODE ON ITEM 16. APPLY CLEAR LAMINATE AFTER PRINTING.
 - ITEM 5 INSTALL WITH LOCKTITE 242 OR EQUIVALENT

DESCRIPTION LATCH ASM HYD VISUAL INDICATOR W/ CATCH				REV	DATE	BY	ECO #	POWER-PACKER <small>AN ACTUANT COMPANY</small>
MATERIAL				02	01/20/09	DA	09-0163-2	
SIZE C	PROJECTION 	REVISION CRITICAL	TOLERANCES UNLESS OTHERWISE SPECIFIED X .1 BREAK ALL SWAMP EDGES R25/320	THIS DOCUMENT AND THE INFORMATION CONTAINED HEREIN IS THE SOLE PROPERTY OF ACTUANT AND ITS SUBSIDIARIES. IT CONTAINS PROPRIETARY INFORMATION WHICH IS CONFIDENTIAL. ANY USE OR REPRODUCTION OF THIS DRAWING WITHOUT AUTHORIZATION FROM ACTUANT OR ITS SUBSIDIARY MAY WARRANT LEGAL ACTION AGAINST THE USER.				PART NUMBER LH50000101
DO NOT SCALE	LEGEND 	TOTAL NO. OF USED	ANGLE .1"	DRAWN: DK	DATE: 06/28/06	ESR:	SCALE: 1:1	UNITS: INCHES [mm] SHEET 2 OF 2