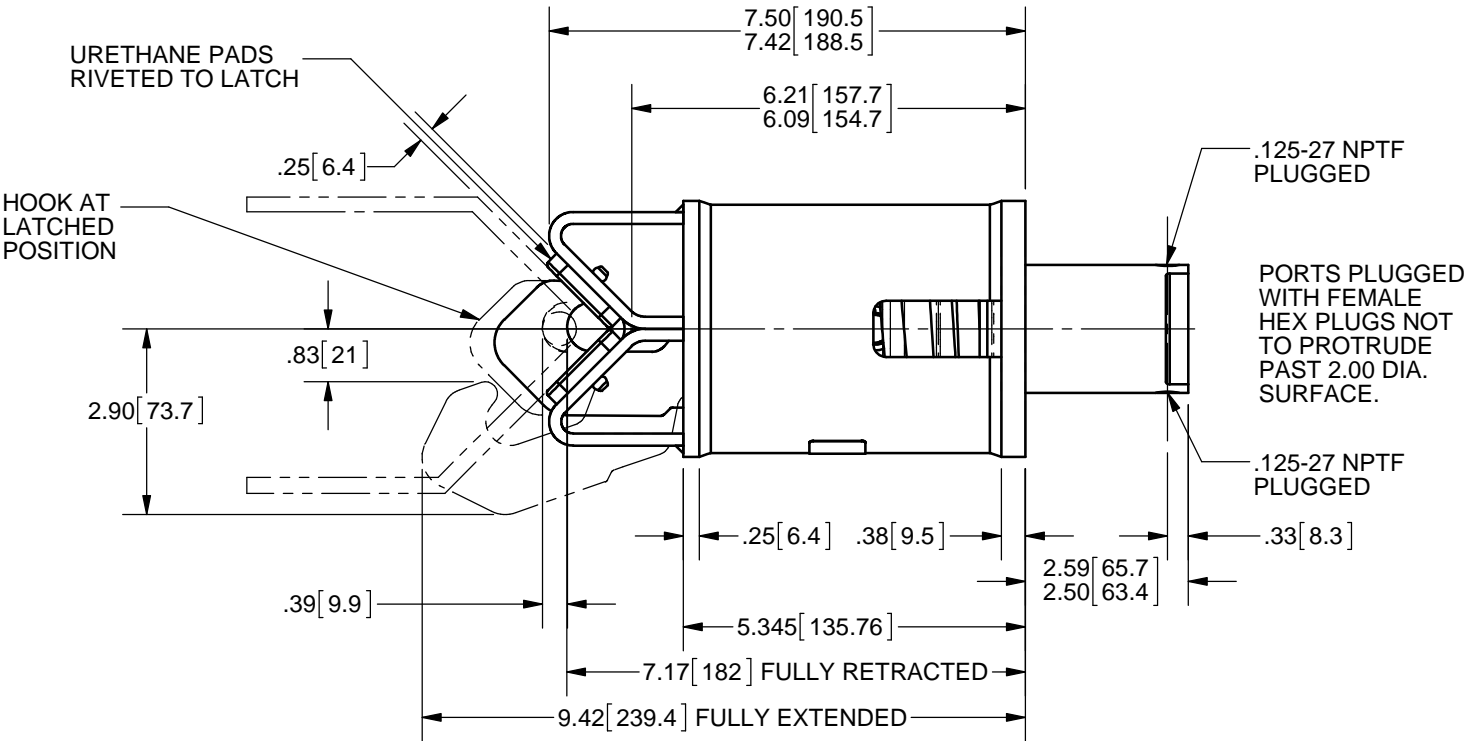
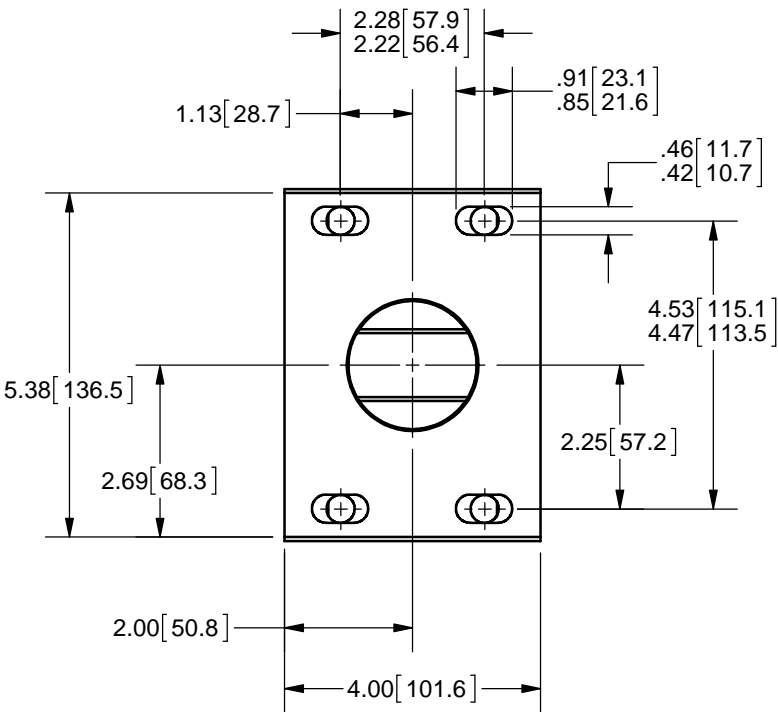
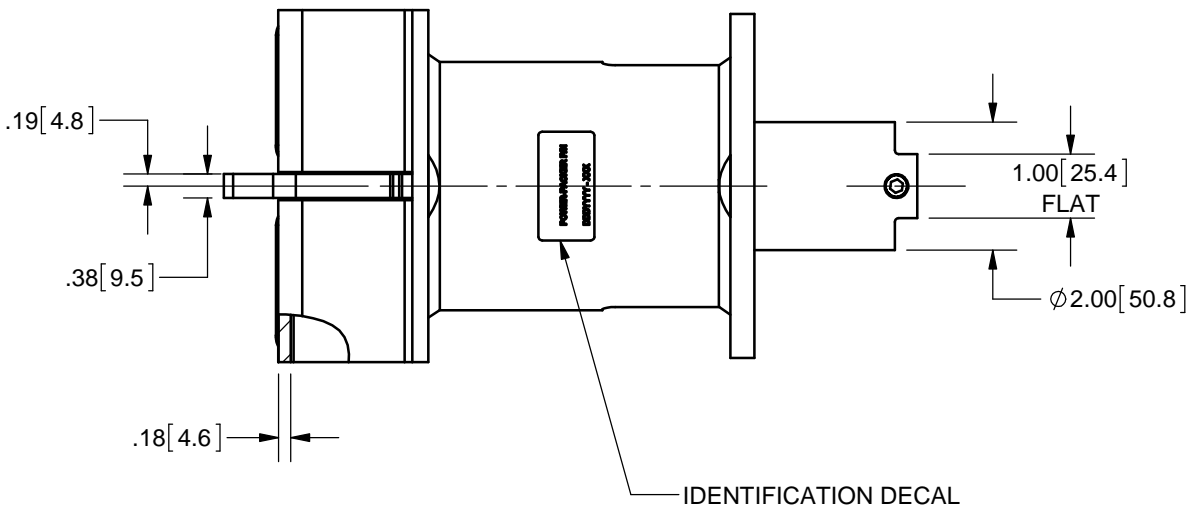
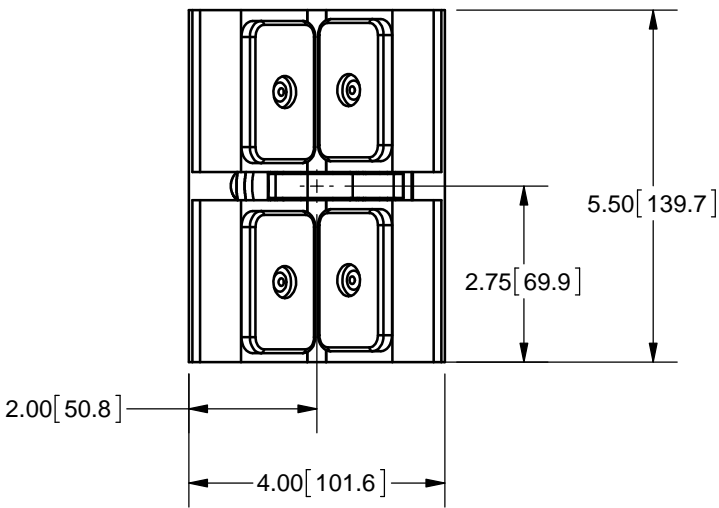


REV	DESCRIPTION	ECO	DATE	BY
0K	CHANGED CUSTOMER PART NUMBER	14-001-16	9/4/14	HG
0L	REMOVED NOTE 1 ADDED CUSTOMER P/N TABLE	15-012-01	4/20/15	LW





SPECIFICATIONS:

OPERATING PRESSURE, LIFT TO FULL EXTENSION.
235-365 PSI [16,2-25,2 BAR]
OPERATING PRESSURE MAX. 5000 PSI [345 BAR]
HOOK SPRING PRELOAD AT FULLY RETRACTED POSITION
320 LBS. [167 KG]
HOOK SPRING PRELOAD AT LATCHED POSITION.
368 LBS. [167 KG]
RECOMMENDED HYDRAULIC FLUID: PER MIL-5606 OR EQUIV.
MAX TORQUE ON .125 NPTF FITTINGS. 12FT. LBS.
LATCH ASSEMBLY TO HAVE A MIN. ULTIMATE TENSILE
STRENGTH OF 10000 LBS. [44,5 kN]
LATCH PAINTED: BLACK
PAINT WILL MEET B-117 96 HOURS SALT SPRAY REQUIREMENT.
PAINT SPECIFICATION BLACK PER PP1199029
UNIT CAN BE PLUMBED TO EITHER 1/8-27 NPTF PORT BY REMOVING
THE PLUG FOR RIGHT HAND OR LEFT HAND MOUNTING.



APPROX. WEIGHT 12.76 LBS.

DO NOT SCALE

DESCRIPTION										REV	DATE	BY	ECO #	POWER - PACKER AN <i>Actuant</i> COMPANY								
LATCH ASSEMBLY										0K	9/4/14	HG	14-001-16									
MATERIAL										THIS DOCUMENT AND THE INFORMATION CONTAINED HEREIN IS THE SOLE PROPERTY OF ACTUANT AND ITS SUBSIDIARIES. IT CONTAINS PROPRIETARY INFORMATION, WHICH IS CONFIDENTIAL. ANY USE OR REPRODUCTION OF THIS DRAWING WITHOUT AUTHORIZATION FROM ACTUANT OR ITS SUBSIDIARY MAY WARRANT LEGAL ACTION AGAINST THE USER.				0L		4/20/15	LW	15-012-01	PART NUMBER		REV.	
SIZE		PROJECTION		LEGEND	REVISION		UNLESS OTHERWISE SPECIFIED ALL DIMENSIONS ARE REFERENCE		DRAWN: DK					DATE: 4/20/2015		LH30037230		0L				
B					CRITICAL				ESR:					SCALE: 1:3		UNITS: INCHES [mm]		SHEET 1 OF 1				
					TOTAL NO. OF  USED				SIMILAR TO:													