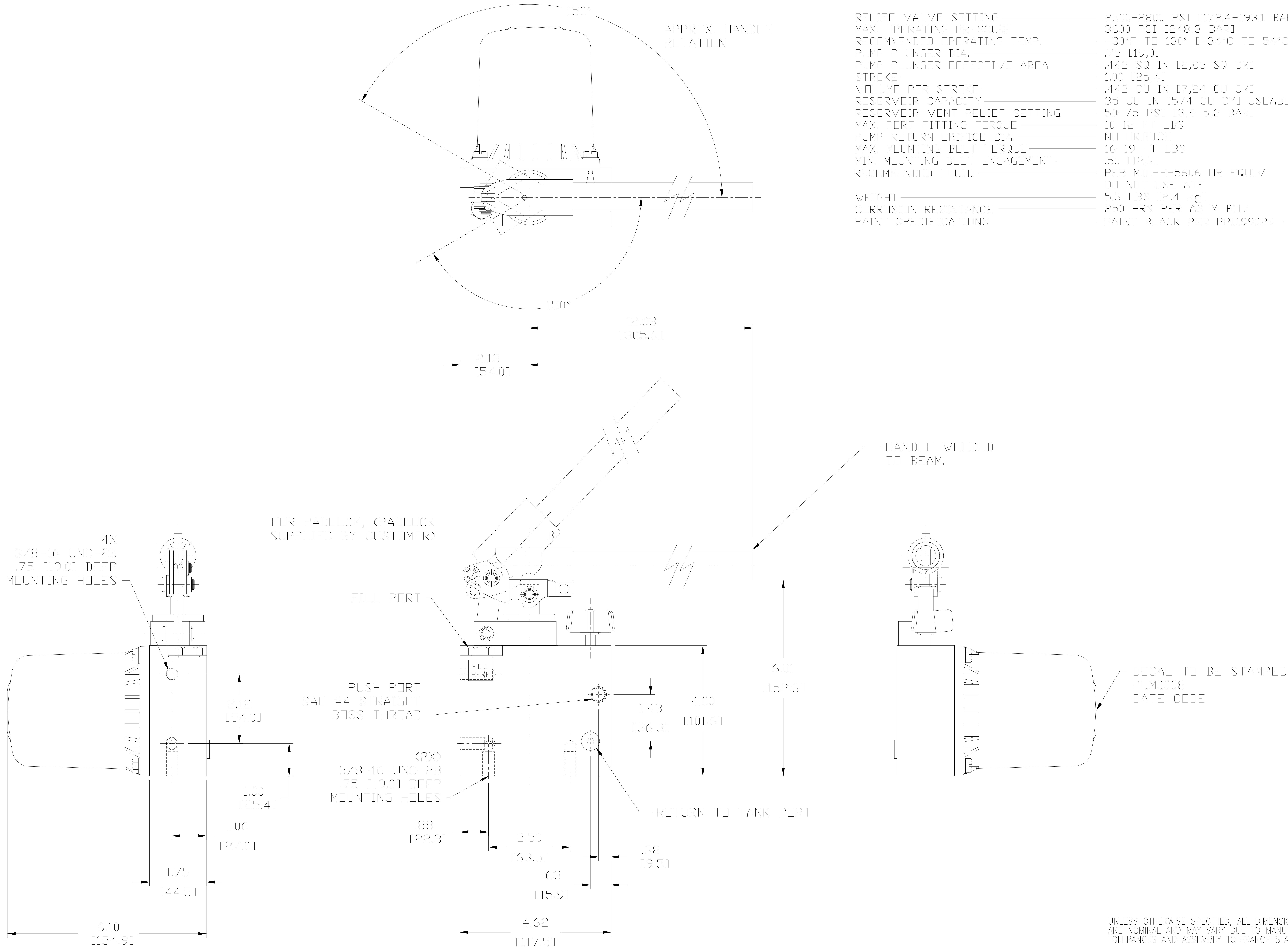
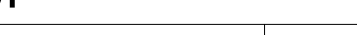


SPECIFICATIONS:

RELIEF VALVE SETTING	2500-2800 PSI [172.4-193.1 BAR]
MAX. OPERATING PRESSURE	3600 PSI [248,3 BAR]
RECOMMENDED OPERATING TEMP.	-30°F TO 130° [-34°C TO 54°C]
PUMP PLUNGER DIA.	.75 [19,0]
PUMP PLUNGER EFFECTIVE AREA	.442 SQ IN [2,85 SQ CM]
STROKE	1.00 [25,4]
VOLUME PER STROKE	.442 CU IN [7,24 CU CM]
RESERVOIR CAPACITY	35 CU IN [574 CU CM] USEABLE
RESERVOIR VENT RELIEF SETTING	50-75 PSI [3,4-5,2 BAR]
MAX. PORT FITTING TORQUE	10-12 FT LBS
PUMP RETURN ORIFICE DIA.	NO ORIFICE
MAX. MOUNTING BOLT TORQUE	16-19 FT LBS
MIN. MOUNTING BOLT ENGAGEMENT	.50 [12,7]
RECOMMENDED FLUID	PER MIL-H-5606 OR EQUIV. DO NOT USE ATF
WEIGHT	5.3 LBS [2,4 kg]
CORROSION RESISTANCE	250 HRS PER ASTM B117
PAINT SPECIFICATIONS	PAINT BLACK PER PP1199029 - BODY ONLY.



UNLESS OTHERWISE SPECIFIED, ALL DIMENSIONS ARE NOMINAL AND MAY VARY DUE TO MANUFACTURING TOLERANCES AND ASSEMBLY TOLERANCE STACK-UP.

DO NOT SCALE	DESCRIPTION HYDRAULIC HAND PUMP		DRAWN: DK		Actuant - POWER PACKER	
	MATERIAL SEE BOM		DATE: 05/25/05			
	SIZE		CHECKED:		LAST REVISED: 01/09/12	
	PROJECTION		DATE:		ECN: 10-014-02	
			TOLERANCES		PART NUMBER	
DECIMALS ANGLES X ± .015 ± 1° XX ± .010 XXX ± .005 BREAK ALL SHARP EDGES .005/.030 UNLESS OTHERWISE SPECIFIED			REV.			
THIS DOCUMENT AND THE INFORMATION CONTAINED HEREIN IS THE SOLE PROPERTY OF ACTUANT AND ITS SUBSIDIARIES. IT CONTAINS PROPERTY INFORMATION, WHICH IS CONFIDENTIAL. ANY USE OR REPRODUCTION OF THIS DRAWING WITHOUT AUTHORIZATION FROM ACTUANT OR IT'S SUBSIDIARIE MAY WARRENT LEGAL ACTION AGAINST THE USER.		UNITS: INCHES [mm] SCALE: 1:2		HP50044211		
		REF: SHEET 1 OF 1		0F		