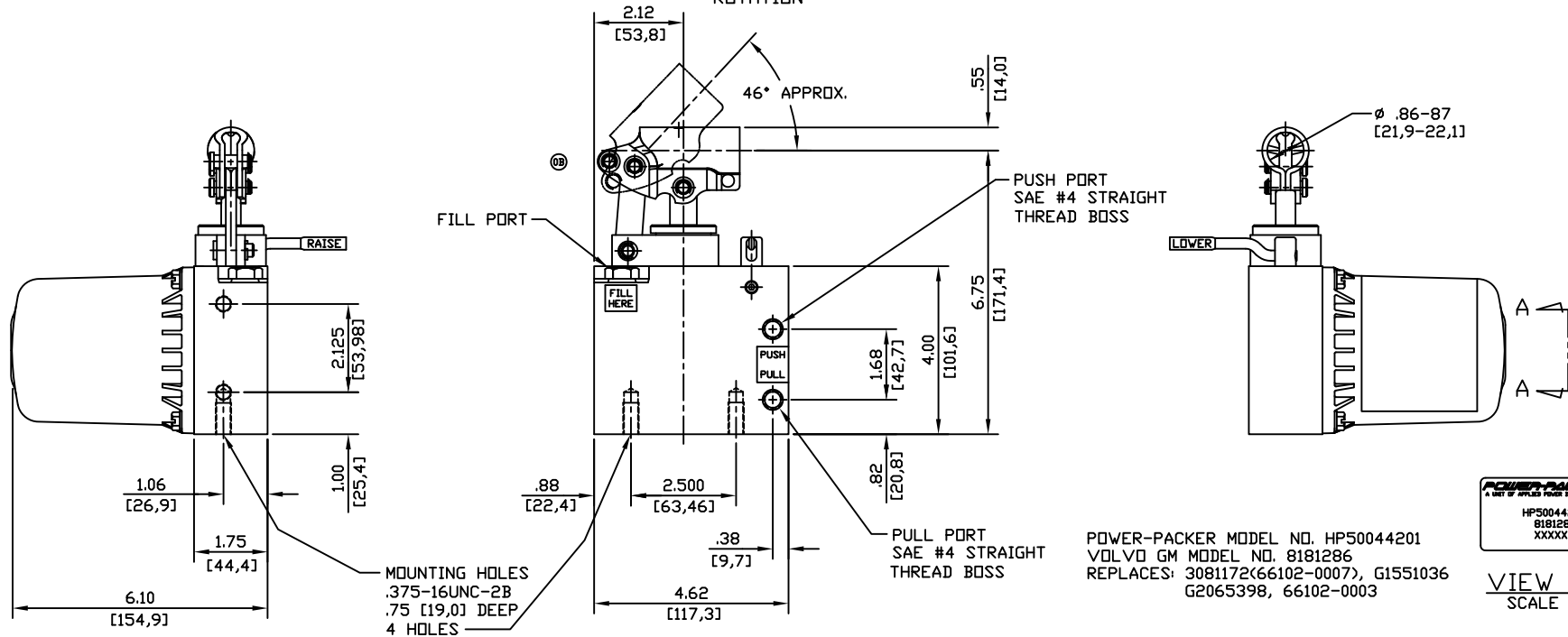


RAISE / LOWER SHIFT LEVER TO BE IN 'LOWER' POSITION, AS SHOWN DURING VEHICLE OPERATION.

### SPECIFICATIONS:

RELIEF VALVE SETTING	3200-3500 PSI [220,6-241,3 BAR]
MAX. OPERATING PRESSURE	3600 PSI [248,3 BAR]
RECOMMENDED OPERATING TEMP.	-30°F TO 130° [-34°C TO 54°C]
PUMP PLUNGER DIA.	.75 [19,0]
PUMP PLUNGER EFFECTIVE AREA	.442 SQ IN [2,85 SQ CM]
STROKE	1.00 [25,4]
VOLUME PER STROKE	.442 CU IN [7,24 CU CM]
RESERVOIR CAPACITY	35 CU IN [574 CU CM] USEABLE
RESERVOIR VENT RELIEF SETTING	50-75 PSI [3,4-5,2 BAR]
MAX. PORT FITTING TORQUE	10-12 FT LBS
PUMP RETURN ORIFICE DIA.	.018 [0,46]
MAX. MOUNTING BOLT TORQUE	16-19 FT LBS
MIN. MOUNTING BOLT ENGAGEMENT	.50 [12,7]
RECOMMENDED FLUID	PER MIL-H-5606 OR EQUIV.
WEIGHT	5.3 LBS [2,4 kg]
CORROSION RESISTANCE	250 HRS PER ASTM B117
PAINT SPECIFICATIONS	BLACK PER PP1199029



POWER-PACKER MODEL NO. HP50044201  
VOLVO GM MODEL NO. 8181286  
REPLACES: 3081172(66102-0007), G1551036  
G2065398, 66102-0003



VIEW A-A  
SCALE 2:1

UNLESS OTHERWISE SPECIFIED, ALL DIMENSIONS ARE NOMINAL AND MAY VARY DUE TO MANUFACTURING TOLERANCES AND ASSEMBLY TOLERANCE STACK-UP.

FILE NO. 000556

REVISED BEAM PINS & CLIPS 08-04-7 LV 3/7/98 A DLS 07-06-93 2/1/01 3/25/98 RELEASED 3-24-94 CHANGES	DIMENSIONS IN BRACKETS ARE IN [mm]		<b>POWER-PACKER</b> A UNIT OF APPLIED POWER INC.		13000 WEST SILVER SPRING DR. BUTLER, WISCONSIN 53007
	Specification Sheet			DESCRIPTION TILT CAB PUMP	
MODEL NO.	HP50044201	DR. PMS CH	DATE 03/24/93	DRAWING NO. PID 135	DWG. SIZE C