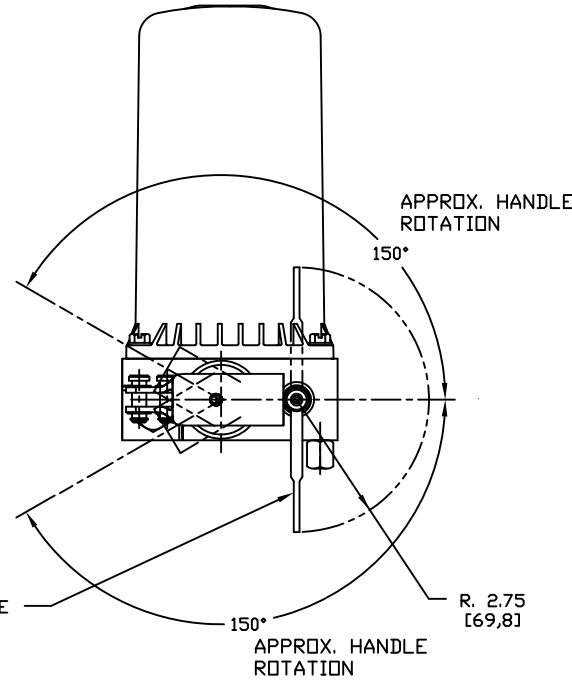


SPECIFICATIONS:

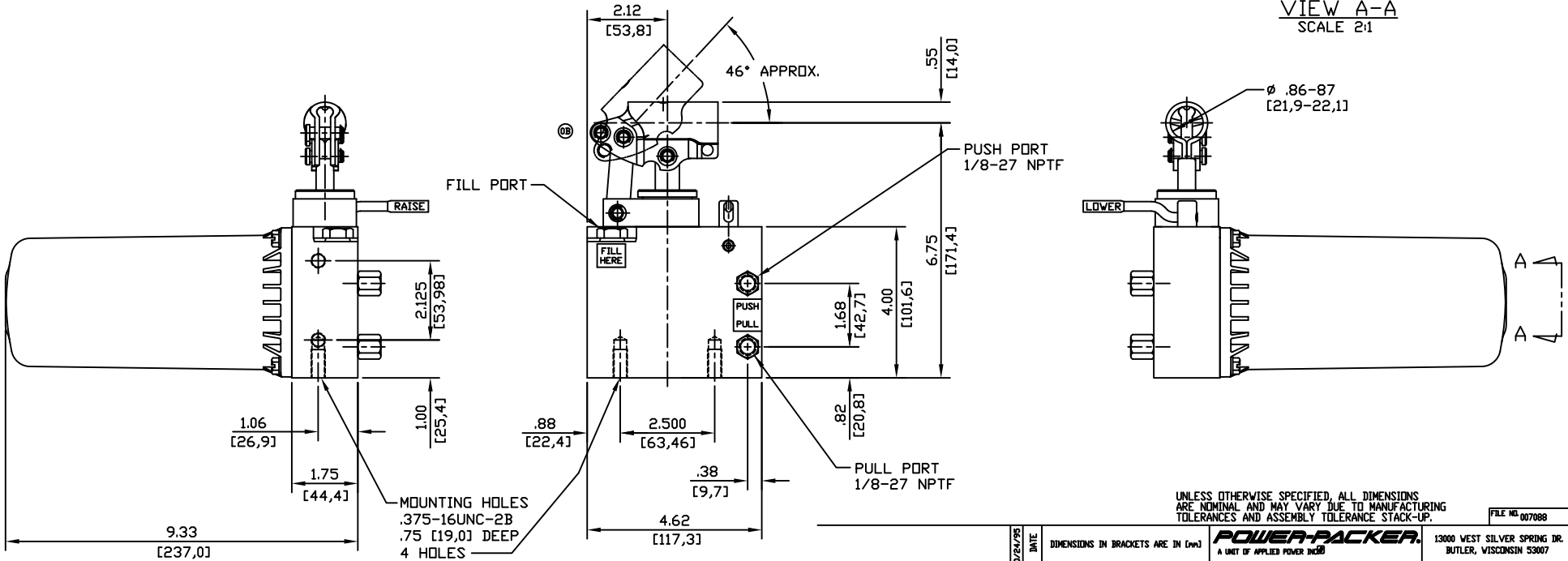
RELIEF VALVE SETTING	3200-3500 PSI [220,6-241,3 BAR]
MAX. OPERATING PRESSURE	3600 PSI [248,2 BAR]
RECOMMENDED OPERATING TEMP.	-30°F TO 130° [-34°C TO 54°C]
PUMP PLUNGER DIA.	.69 [17,5]
PUMP PLUNGER EFFECTIVE AREA	.371 SQ IN [2,39 SQ CM]
STROKE	1.00 [25,4]
VOLUME PER STROKE	.371 CU IN [6,08 CU CM]
RESERVOIR CAPACITY	65 CU IN [1065,2 CU CM] USEABLE
RESERVOIR VENT RELIEF SETTING	50-75 PSI [3,4-5,2 BAR]
MAX. PORT FITTING TORQUE	10-12 FT LBS
PUMP RETURN ORIFICE DIA.	.018 [0,46]
MAX. MOUNTING BOLT TORQUE	16-19 FT LBS
MIN. MOUNTING BOLT ENGAGEMENT	.50 [12,7]
RECOMMENDED FLUID	PER MIL-H-5606 OR EQUIV. DO NOT USE ATF
WEIGHT	5.4 LBS. [2,5 kg]
CORROSION RESISTANCE	250 HRS PER ASTM B117
PAINT SPECIFICATIONS	SEMI-GLOSS BLACK PRIMER



RAISE / LOWER SHIFT LEVER TO BE IN 'LOWER' POSITION, AS SHOWN DURING VEHICLE OPERATION.



VIEW A-A
SCALE 2:1



UNLESS OTHERWISE SPECIFIED, ALL DIMENSIONS ARE NOMINAL AND MAY VARY DUE TO MANUFACTURING TOLERANCES AND ASSEMBLY TOLERANCE STACK-UP.

FILE NO. 007088

30785 ECO	RELEASE	10/24/95	DATE	DIMENSIONS IN BRACKETS ARE IN [mm]		POWER-PACKER A UNIT OF APPLIED POWER INC.		13000 WEST SILVER SPRING DR. BUTLER, WISCONSIN 53007	
	CHANGES			Specification Sheet		DESCRIPTION IDENTIFICATION DWG. TILT PUMP			
	MODEL NO.	HP50037207	DR. SWS CH.	DATE 10/24/95	DRAWING NO. PID 363	DWG. SIZE C			