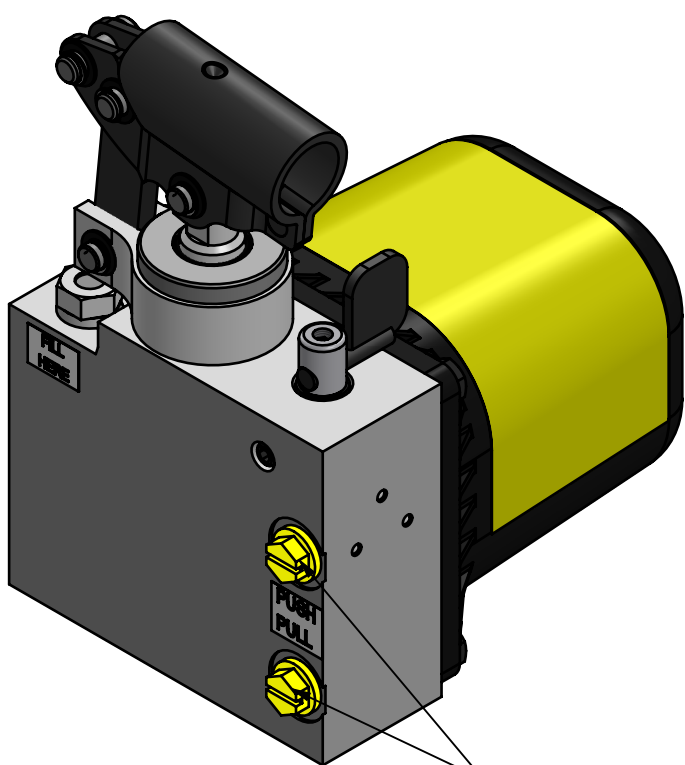
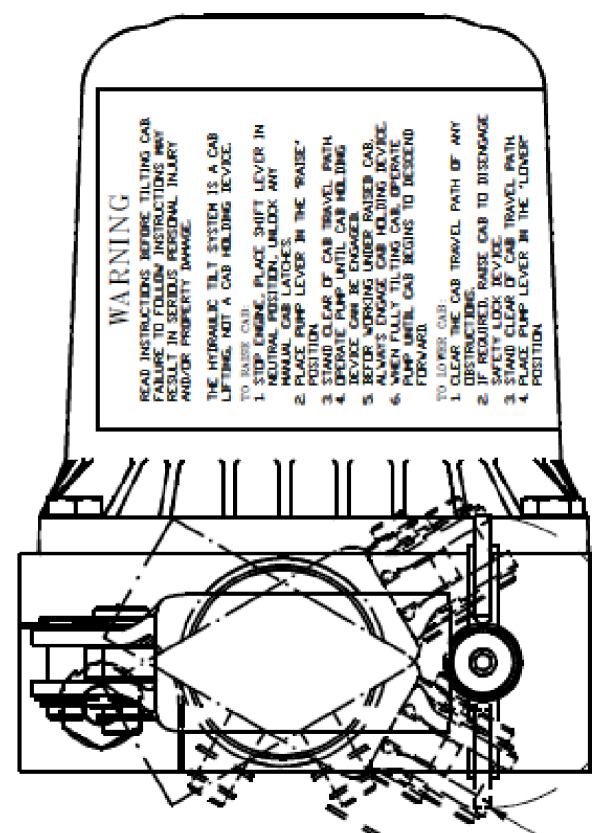


REV	DESCRIPTION	ECO	DATE	BY
0B	CHANGED TO 3010002303 BEAM AND PP553061 PINS	10-014-2	01/19/12	
0C	REVISED TORQUE	12-015-03	3/17/15	DR
0D	BLOW UP VIEW, UPDATED - TORQUE TABLE	16-164-01	5/3/17	YG



SHIPPING PLUGS

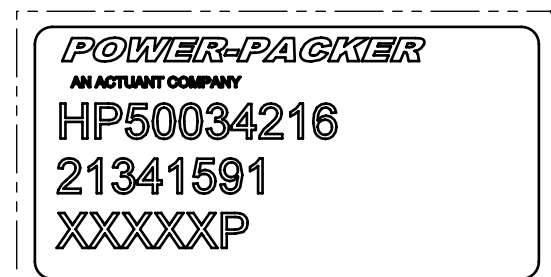
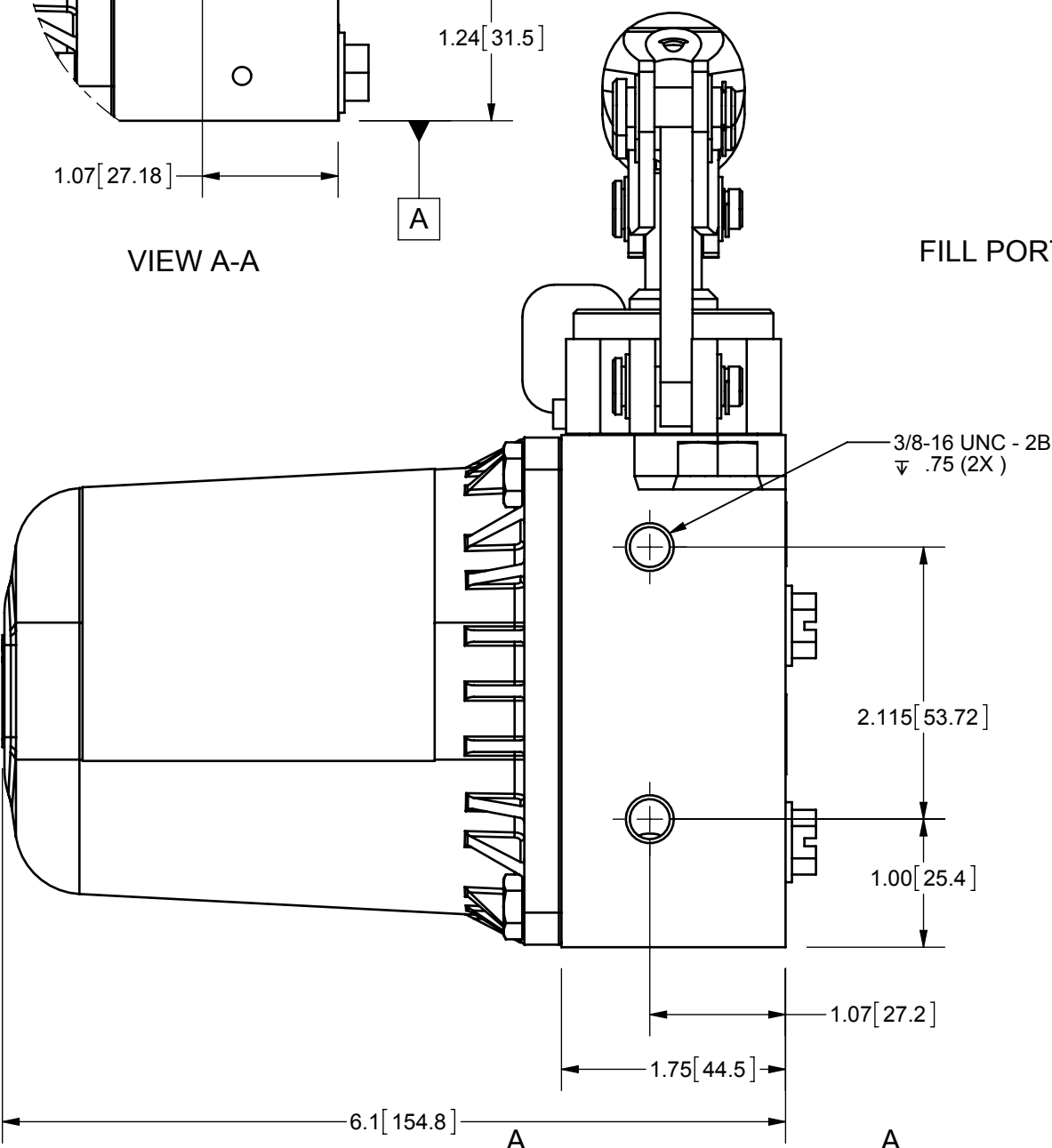
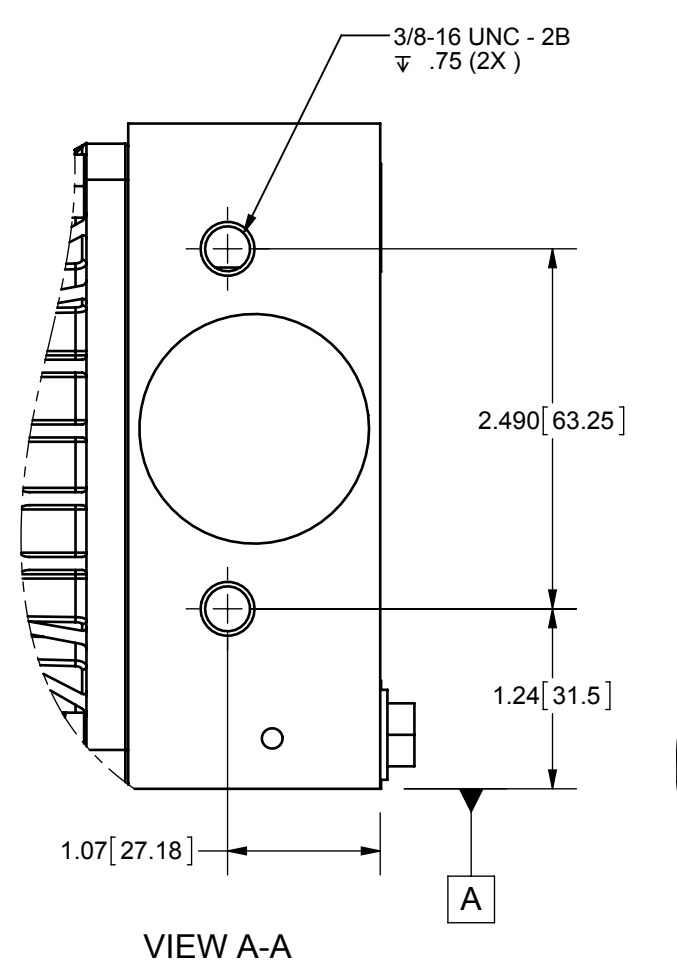


R1.18 [30.0]

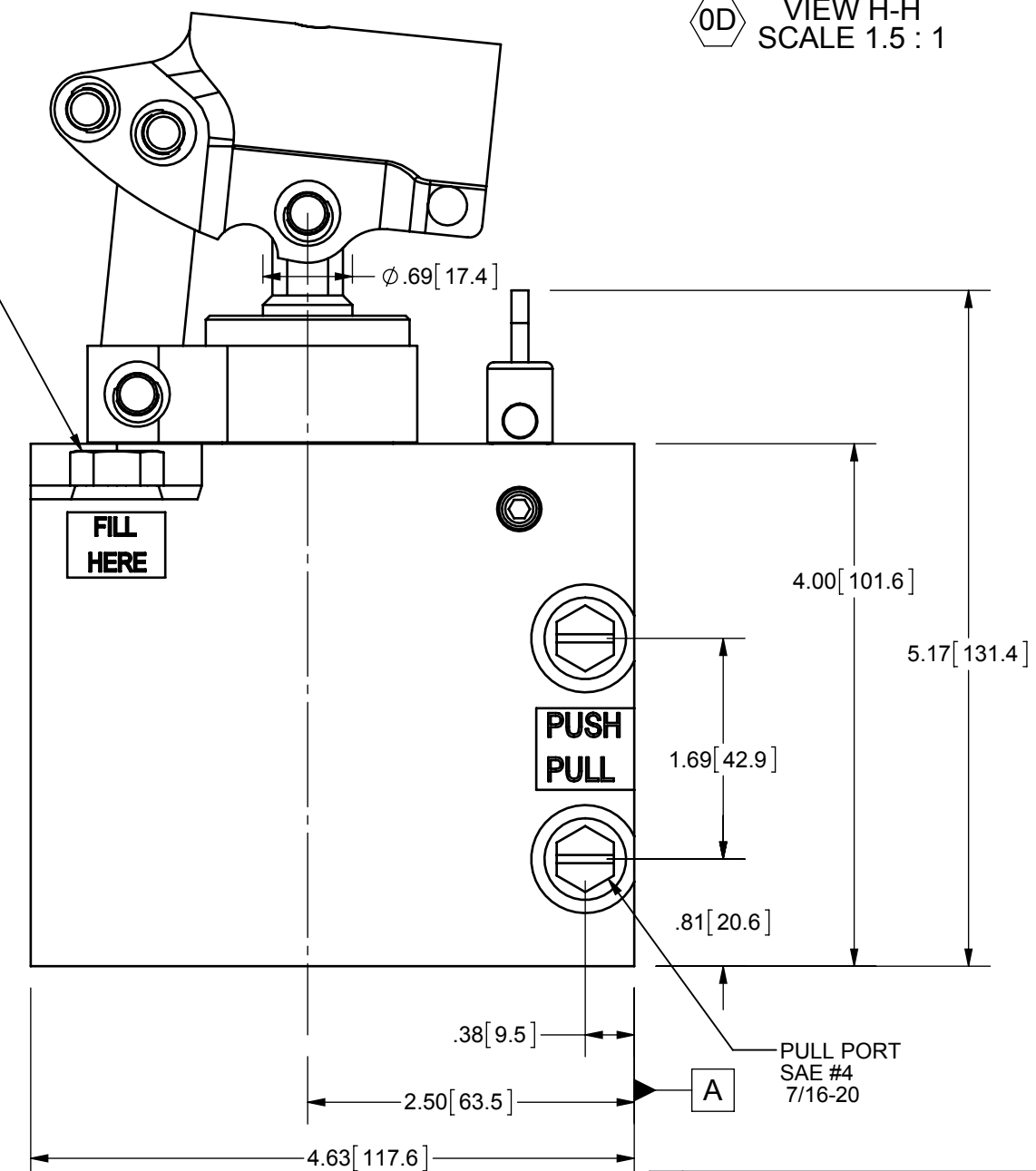
LEVER MUST BE IN "LOWER" POSITION AS SHOWN, DURING VEHICLE OPERATION.

**SPECIFICATIONS:**

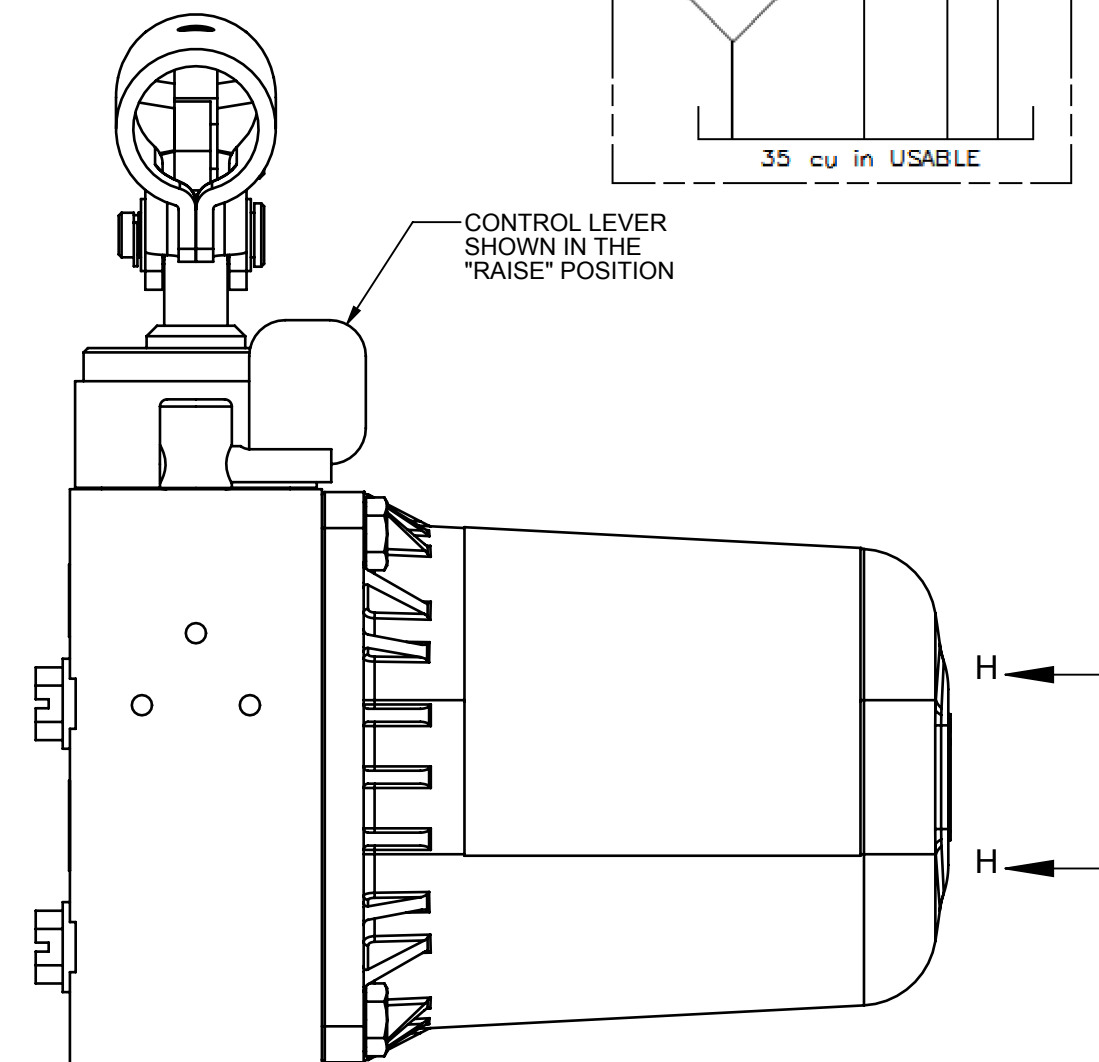
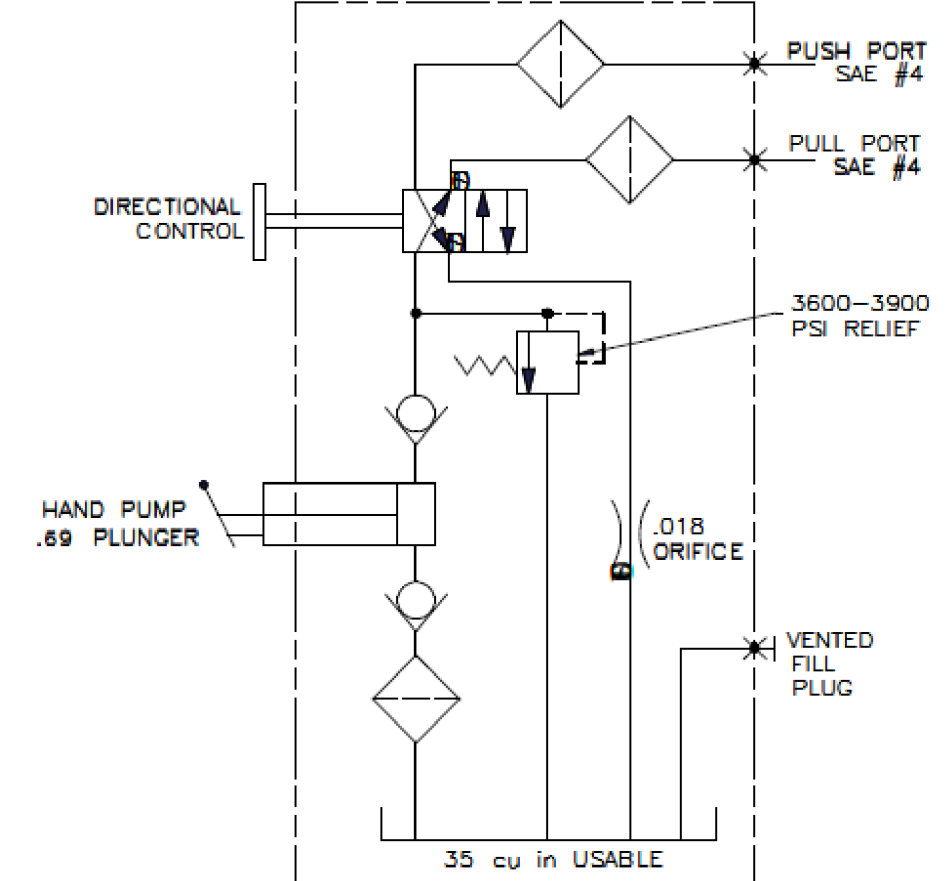
RELIEF VALVE SETTING	3600-3900 PSI [248-269 BAR]
MAX. OPERATING PRESSURE	4400 PSI [303 BAR]
RECOMMENDED OPERATING TEMP	-30°F TO 130°F [-34°C - 54°C]
PUMP PLUNGER DIA	.69 IN [17.5 CM]
PUMP PLUNGER EFFECTIVE AREA	.371 SQ IN [2.4 SQ CM]
PUMP STROKE	1.00 IN [25 CM]
VOLUME PER STROKE	.37 CU IN [6.1 CU CM]
RESERVOIR CAPACITY	35 CU IN [574 CU CM] USABLE
RESERVOIR VENT RELIEF	50-75 PSI [3-5 BAR]
MAX PORT FITTING TORQUE	22-26 FT-LBS [30-35 N-M]
PUMP RETURN ORIFICE DIA	.018 IN [0.46 CM]
MAX MOUNTING BOLT TORQUE	16-19 FT-LBS [22-26 N-M]
MIN MOUNTING BOLT ENGAGEMENT	.50 IN [13 CM]
RECOMMENDED FLUID	PER MIL-PRF-5606 OR EQUIV. DO NOT USE ATF WITH CYLINDER VELOCITY FUSES
WEIGHT	5.3 LBS [2.4 KG]
CORROSION RESISTANCE	250 HRS PER ASTM B117
PAINT SPECIFICATIONS	NONE



0D VIEW H-H SCALE 1.5 : 1



**HAND PUMP SCHEMATIC**



**NOTE:**  
 1. REF. PSD23 FOR SERVICE DRAWING AND REPAIR KITS  
 2. MACK P/N: 21341591

DO NOT SCALE	DESCRIPTION	TRUCK TILT PUMP MANUAL .69 3600 35 PADDLE		REV	DATE	BY	ECO #	<b>POWER - PACKER</b> AN ACTUANT COMPANY
	MATERIAL	SEE BOM		0B	01/19/12	JJF	10-014-2	
	SIZE	PROJECTION	LEGEND	0C	3/17/15	DR	12-015-03	
	TOLERANCES		REVISION	0D	5/3/17	YG	16-164-01	
ALL DIMENSIONS ARE REFERENCES UNLESS OTHERWISE SPECIFIED		CRITICAL	DATE: 3/14/2017	DRAWN: LANCIONE		HP50034216		REV.
TOTAL NO. OF $\diamond$ USED		WARRANTY LEGAL ACTION AGAINST THE USER.		DATE: 3/14/2017		ESR: 10-014		0D
				SCALE: 1:4		UNITS: INCHES [mm]		SHEET 1 OF 1