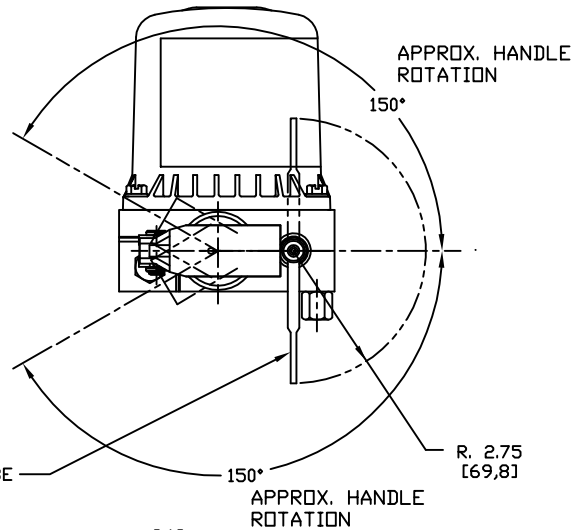
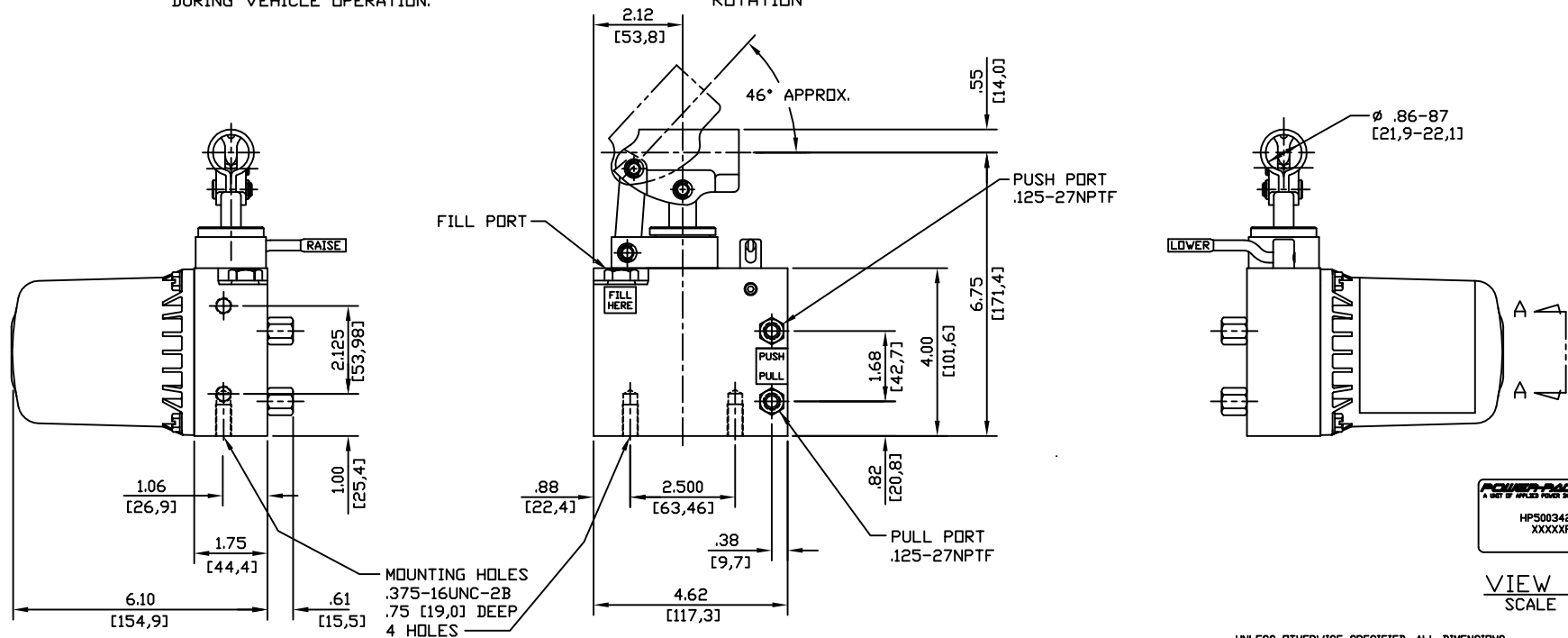


SPECIFICATIONS:

RELIEF VALVE SETTING	4000-4300 PSI [275,8-296,5 BAR]
MAX. OPERATING PRESSURE	4400 PSI [303,4 BAR]
RECOMMENDED OPERATING TEMP.	-30°F TO 130° [-34°C TO 54°C]
PUMP PLUNGER DIA.	.69 [17,5]
PUMP PLUNGER EFFECTIVE AREA	.371 SQ IN [2,39 SQ CM]
STROKE	1.00 [25,4]
VOLUME PER STROKE	.371 CU IN [6,08 CU CM]
RESERVOIR CAPACITY	35 CU IN [574 CU CM] USEABLE
RESERVOIR VENT RELIEF SETTING	50-75 PSI [3,4-5,2 BAR]
MAX. PORT FITTING TORQUE	10-12 FT LBS
PUMP RETURN ORIFICE DIA.	.018 [0,46]
MAX. MOUNTING BOLT TORQUE	16-19 FT LBS
MIN. MOUNTING BOLT ENGAGEMENT	.50 [12,7]
RECOMMENDED FLUID	PER MIL-H-5606 OR EQUIV.
WEIGHT	DO NOT USE ATF 5.3 LBS [2,4 kg]
CORROSION RESISTANCE	250 HRS PER ASTM B117
PAINT SPECIFICATIONS	SEMI-GLOSS BLACK



RAISE / LOWER SHIFT LEVER TO BE IN 'LOWER' POSITION, AS SHOWN DURING VEHICLE OPERATION.



UNLESS OTHERWISE SPECIFIED, ALL DIMENSIONS ARE NOMINAL AND MAY VARY DUE TO MANUFACTURING TOLERANCES AND ASSEMBLY TOLERANCE STACK-UP.

FILE NO. 000546

POWER-PACKER
A UNIT OF APPLIED POWER INC.

12801 WEST SILVERSPRING RD.
BUTLER, WISCONSIN 53007

DATE	10/23/94	DESCRIPTION	TILT CAB PUMP
RELEASED	3-24-94	MODEL NO.	HP50034204
CHANGES		DR. []	
		DATE	10/23/94
		DATE	3-24-94
		DRAWING NO.	PID 134
		DRWG. SIZE	C