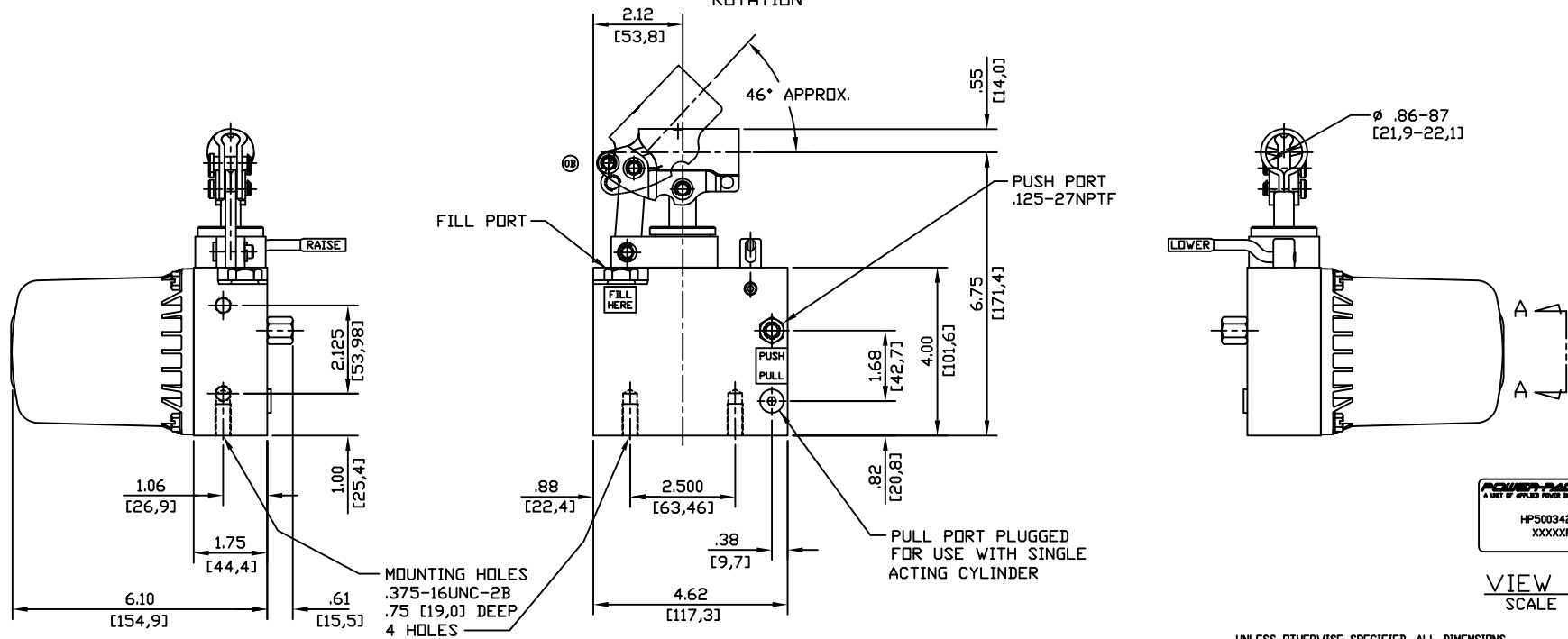
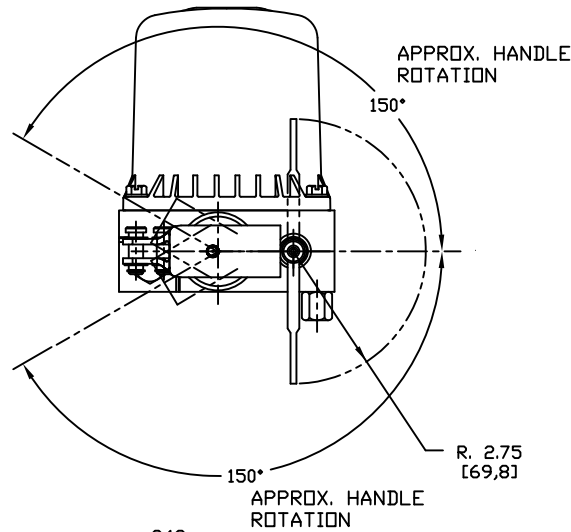


SPECIFICATIONS:

| | |
|-------------------------------|---------------------------------|
| RELIEF VALVE SETTING | 3200-3500 PSI [220,6-241,3 BAR] |
| MAX. OPERATING PRESSURE | 4400 PSI [303,4 BAR] |
| RECOMMENDED OPERATING TEMP. | -30°F TO 130° [-34°C TO 54°C] |
| PUMP PLUNGER DIA. | .69 [17,5] |
| PUMP PLUNGER EFFECTIVE AREA | .371 SQ IN [2,39 SQ CM] |
| STROKE | 1.00 [25,4] |
| VOLUME PER STROKE | .371 CU IN [6,08 CU CM] |
| RESERVOIR CAPACITY | 35 CU IN [574 CU CM] USEABLE |
| RESERVOIR VENT RELIEF SETTING | 50-75 PSI [3,4-5,2 BAR] |
| MAX. PORT FITTING TORQUE | 10-12 FT LBS |
| PUMP RETURN ORIFICE DIA. | .032 [0,81] |
| MAX. MOUNTING BOLT TORQUE | 16-19 FT LBS |
| MIN. MOUNTING BOLT ENGAGEMENT | .50 [12,7] |
| RECOMMENDED FLUID | PER MIL-H-5606 OR EQUIV. |
| WEIGHT | 5.3 LBS [2,4 kg] |
| CORROSION RESISTANCE | 250 HRS PER ASTM B117 |
| PAINT SPECIFICATIONS | SEMI-GLOSS BLACK |



VIEW A-A
SCALE 2:1

UNLESS OTHERWISE SPECIFIED, ALL DIMENSIONS ARE NOMINAL AND MAY VARY DUE TO MANUFACTURING TOLERANCES AND ASSEMBLY TOLERANCE STACK-UP. FILE NO. 000560

| | | | | | | | |
|---|------|------------------------------------|------------------|---|------------------------------|---|--|
| REVISED BEAM PINS & CLIP 08-04-7 LV A MPJ 7-23-94 30460 RELEASED 3-25-94 EEO CHANGES | DATE | DIMENSIONS IN BRACKETS ARE IN [mm] | | POWER-PACKER A UNIT OF APPLIED POWER INC. | | 13000 WEST SILVER SPRING DR. BUTLER, WISCONSIN 53007 | |
| Specification Sheet | | | | | DESCRIPTION TILT CAB PUMP | | |
| MODEL NO. HP50034203 | | DR. PINS CH. | DATE 03/25/94 | DRAWING NO. PID 136 | | DWG. SIZE C | |