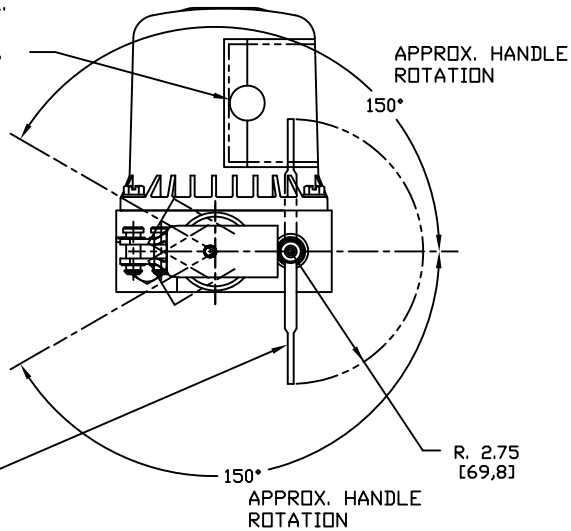


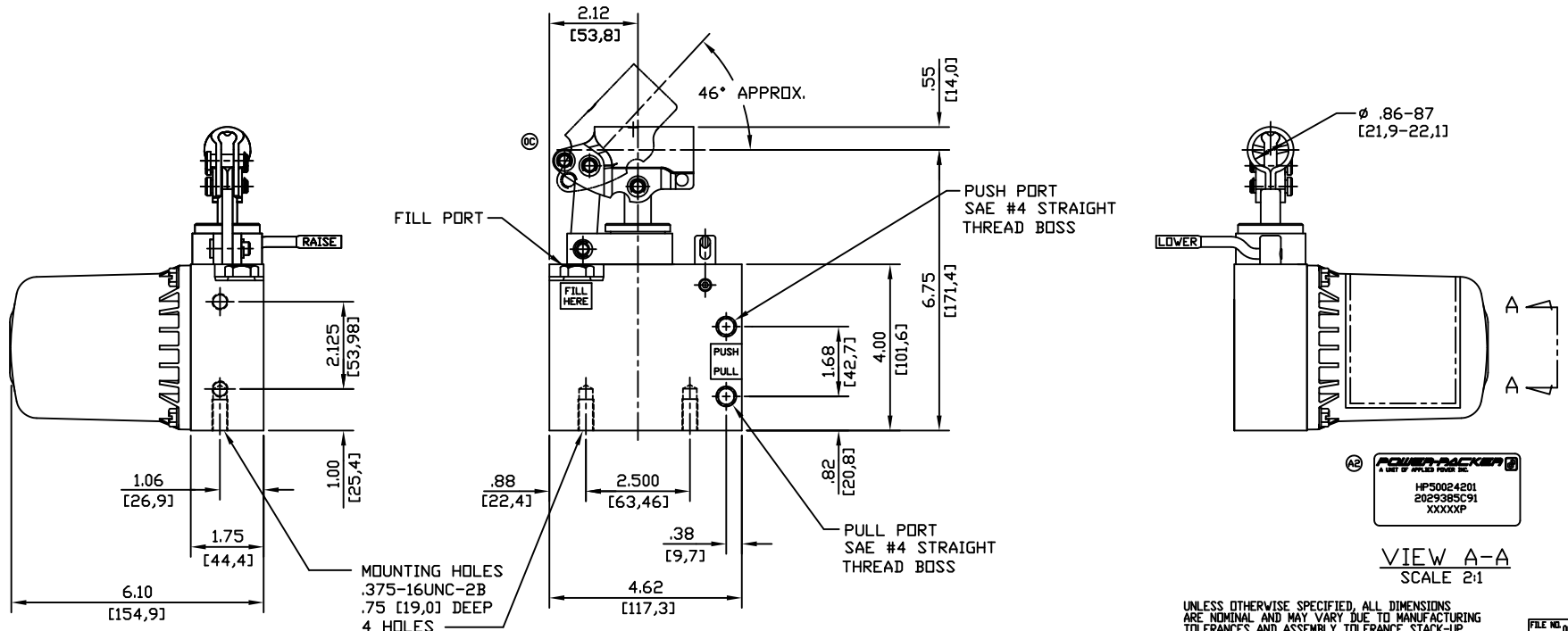
WARNING DECAL WITH PAINT MASK.
 NAVISTAR PART NO. 1672229C1
 WITH RED IDENTIFICATION CIRCLE.



RAISE / LOWER SHIFT LEVER TO BE
 IN 'LOWER' POSITION, AS SHOWN
 DURING VEHICLE OPERATION.

SPECIFICATIONS:

- POWER-PACKER PART NUMBER _____ HP50024201
- NAVISTAR PART NUMBER _____ 2029385C91
- RELIEF VALVE SETTING _____ 4500-4800 PSI [310-331 BAR]
- MAX. OPERATING PRESSURE _____ 5000 PSI [345 BAR]
- RECOMMENDED OPERATING TEMP. _____ -30°F TO 130° [-34°C TO 54°C]
- PUMP PLUNGER DIA. _____ .56 [14,2]
- PUMP PLUNGER EFFECTIVE AREA _____ .246 SQ IN [1,59 SQ CM]
- STROKE _____ 1.00 [25,4]
- VOLUME PER STROKE _____ .246 CU IN [4,03 CU CM]
- RESERVOIR CAPACITY _____ 35 CU IN USEABLE [574 CU CM] USEABLE
- RESERVOIR VENT RELIEF SETTING _____ 50-75 PSI [3,4-5,2 BAR]
- MAX. PORT FITTING TORQUE _____ 10-12 FT LBS
- PUMP RETURN ORIFICE DIA. _____ .018 [0,46]
- MAX. MOUNTING BOLT TORQUE _____ 16-19 FT LBS
- MIN. MOUNTING BOLT ENGAGEMENT _____ .50 [12,7]
- RECOMMENDED FLUID _____ PER MIL-H-5606 OR EQUIV. DO NOT USE ATF
- WEIGHT _____ 5.3 LBS [2,4 kg]
- CORROSION RESISTANCE _____ 250 HRS PER ASTM B117
- PAINT SPECIFICATIONS _____ SEMI-GLOSS BLACK



UNLESS OTHERWISE SPECIFIED, ALL DIMENSIONS ARE NOMINAL AND MAY VARY DUE TO MANUFACTURING TOLERANCES AND ASSEMBLY TOLERANCE STACK-UP. FILE NO. 000153

11-014-7 DC JLR 04/02/16 30459 A INS 4-4-94 30404 RELEASED 12-28-92	DATE	DIMENSIONS IN BRACKETS ARE IN [mm]		POWER-PACKER A UNIT OF APPLIED POWER INC.		12801 WEST SILVERSPRING RD. BUTLER, WISCONSIN 53007	
	CHANGES	DESCRIPTION	Specification Sheet		DESCRIPTION TILT CAB PUMP		FILE NO.
ECO	MODEL NO.	HP50024201	DR. DIMS	DATE	12/14/93	DRAWING NO.	PID 109
			CH. MP. J.	DATE	1-7-94		SIZE
							C