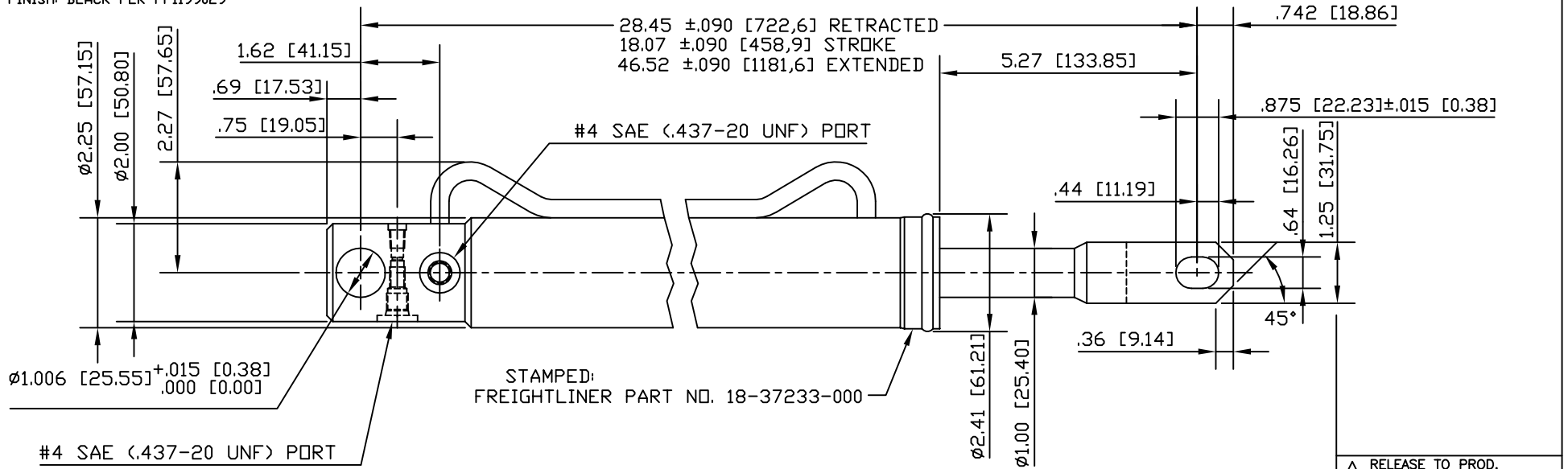


BORE DIAMETER: 2.00 IN. [50.8 MM]
 PUSH AREA: 3.14 SQ.IN. [20.3 SQ.CM]
 PULL AREA (EXCEPT AT MAX. CYL. EXTENSION):
 2.35 SQ.IN. [15.1 SQ.CM]
 PULL AREA AT MAX. CYL. EXTENSION: 1.91 SQ.IN. [12.3 SQ.CM]
 MAXIMUM WORKING PRESSURE — 3500 PSI [241.3 BAR]
 MAXIMUM PUSH FORCE — 10,990 LBS. [4985 KG.]
 MAXIMUM PULL FORCE — 8225 LBS. [3730 KG.]
 RECOMMENDED TEMPERATURE RANGE:
 -30° F. [-34.4°C] TO 130° F. [54.4°C]
 RECOMMENDED FLUID: MIL-H-5606 OR EQUIV.
 MIN. ALLOWABLE PULL FORCE AT FULL EXTENSION:
 20,000 LBS. [9072 KG.]
 FREIGHTLINER SYSTEM UTILIZES A .018 [0.46 MM]
 DIAMETER ORIFICE IN RETURN LINE OF PUMP.
 FINISH: BLACK PER PP1199029

THIS CYLINDER IS EQUIPED WITH A VELOCITY FUSE
 LOCKING DEVICE IN BOTH THE PUSH AND PULL MODES.
 THE VELOCITY FUSE HAS BEEN PRESET TO ACTUATE BETWEEN
 1.1 TO 1.4 GPM [4.2-5.3 LPM] WHEN CYLINDER IS
 TESTED WITH MIL-H-5606 OIL OR EQUIVALENT AT 70° F.
 USING ANY OIL OTHER THAN MIL-H-5606 OR EQUIVALENT
 WILL CHANGE THE VELOCITY FUSE ACTUATION POINT AND
 MAY RESULT IN IMPROPER OPERATION OF THE CYLINDER.
 CYLINDER TO BE SHIPPED FILLED WITH
 MIL-H5606 OIL OR EQUIVALENT.



RELEASE TO PROD.
 ECO 31338 MMO 4/20/98
 ECO CHANGES DATE

UNLESS OTHERWISE SPECIFIED, ALL DIMENSIONS
 ARE NOMINAL AND MAY VARY DUE TO MANUFACTURING
 TOLERANCES AND ASSEMBLY TOLERANCE STACK-UP.

☒ THIS IS AN AUTOCAD
 CONTROLLED DRAWING!
☐ THIS IS A PRO/ENGINEER
 DOCUMENT.

DIMENSIONS IN BRACKETS ARE IN [MM]		SPECIFICATIONS		FINISH UNLESS SPECIFIED ✓ Ra μ [Raz μ m]		13000 WEST SILVER SPRING DR. BUTLER, WISCONSIN 53007	
						APATCH/POWER-PACKER. A UNIT OF APPLIED POWER INC.	
				ALL ANGULAR DIMENSIONS ARE ±1° UNLESS SPECIFIED		TITLE: INSTALLATION DWG., CYLINDER	
WHERE USED (REF)		MODEL (REF)		SCALE 1:2	DO NOT SCALE DRAWING	DR. MMO	DATE 4/17/98
DGS FILE		DRWG. SIZE		CH.	DATE	DRWG. NO.	
012789		B		APP'D.	DATE	PID322	

THIS PRINT AND INFORMATION THEREIN IS CONFIDENTIAL AND PROPRIETARY AND IS THE PROPERTY OF APPLIED POWER INC. IT IS NOT TO BE COPIED OR REPRODUCED WITHOUT WRITTEN PERMISSION OF API.