

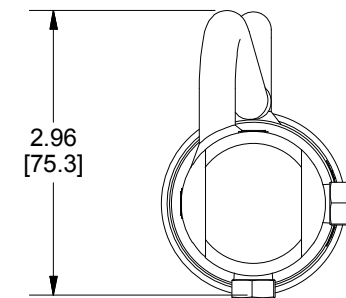
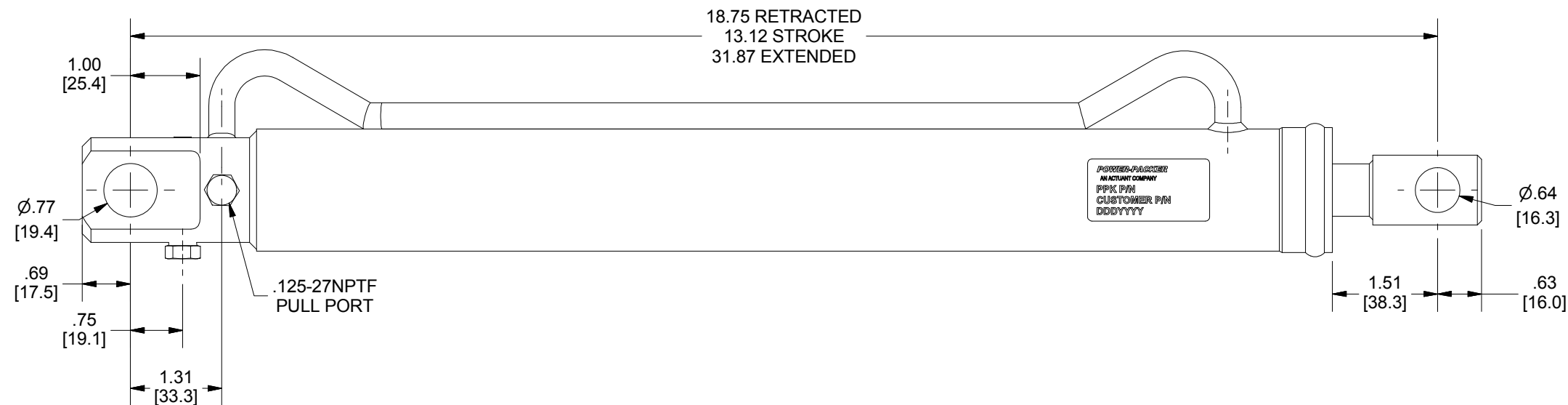
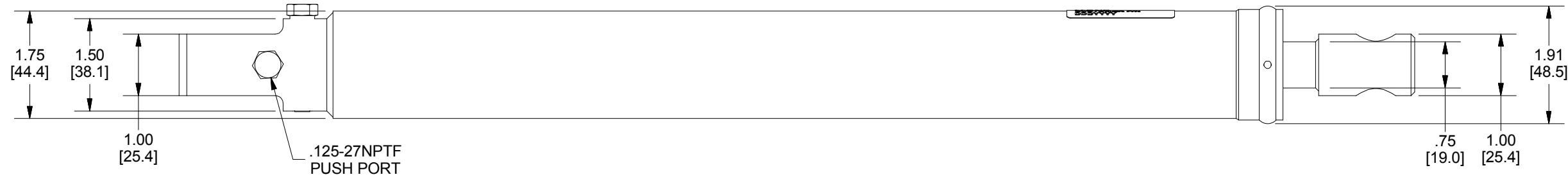
SPECIFICATIONS:

MAXIMUM WORKING PRESSURE: 5000 PSI [345 BAR]
 BORE DIAMETER: 1.50 IN [38.1]
 ROD DIAMETER: .75 IN [19.0]
 PUSH AREA: 1.77 SQ IN [11.4 SQ CM]
 PULL AREA: 1.33 SQ IN [8.6 SQ CM]
 MAXIMUM PUSH FORCE: 8850 LBS [4014 KG]
 MAXIMUM PULL FORCE: 6650 LBS [3016 KG]
 RECOMMENDED FLUID: PER MIL-H-5606 OR EQUIV.
 RECOMMENDED TEMPERATURE RANGE:
 -30°F TO 130°F [-34°C TO 54°C]
 VELOCITY FUSE ACUTATION POINT:
 .8 TO 1.2 GPM @ 70°F [3.1 TO 4.6 LPM @ 21°C]
 PAINT SPECIFICATION: BLACK PER PP1199029
 SERVICE KIT KC1526

CAUTION:

THIS CYLINDER IS EQUIPPED WITH A VELOCITY FUSE
 LOCKING DEVICE IN BOTH THE PULL AND PUSH MODES.
 THE VELOCITY FUSE HAS BEEN PRESET TO ACUTATE
 BETWEEN .8 AND 1.2 GPM [3.1 AND 4.6 LPM] WHEN CYLINDER
 IS TESTED WITH MIL-H-5606 OIL OR EQUIVALENT AT 70°F..
 USING ANY OTHER OIL THAN MIL-H-5606 OR EQUIVALENT
 WILL CHANGE THE VELOCITY FUSE ACUTATION POINT AND
 MAY RESULT IN IMPROPER OPERATION OF THE CYLINDER.

REVISION HISTORY				
REV	DESCRIPTION	ECO	DATE	BY
0M	UPDATE DRAWING	12-030-01	10/31/13	KG
0N	UPDATED CUSTOMER P/N	12-030-02	02/20/14	JJH



DO NOT SCALE	DESCRIPTION CYLINDER ASSEMBLY 1.50 BORE .75 ROD 13.12 STROKE NPTF				REV	DATE	BY	ECO #	POWER-PACKER AN <i>Actuant</i> COMPANY
	MATERIAL				0M	10/31/13	KG	12-030-01	
	SIZE				0N	02/20/14	JJH	12-030-02	PART NUMBER
	PROJECTION				DRAWN: LANCIONE DATE: 10/31/2013				CA15137317
LEGEND				TOLERANCES				UNITS: INCHES [mm]	
○ REVISION ◇ CRITICAL TOTAL NO. OF ◇ USED				ALL DIMENSIONS ARE REFERENCES UNLESS OTHERWISE SPECIFIED				SCALE: 1/2	
THIS DOCUMENT AND THE INFORMATION CONTAINED HEREIN IS THE SOLE PROPERTY OF ACTUANT AND ITS SUBSIDIARIES. IT CONTAINS PROPRIETARY INFORMATION, WHICH IS CONFIDENTIAL. ANY USE OR REPRODUCTION OF THIS DRAWING WITHOUT AUTHORIZATION FROM ACTUANT OR ITS SUBSIDIARY MAY WARRANT LEGAL ACTION AGAINST THE USER.				ESR: 12-030				SHEET 1 OF 1	