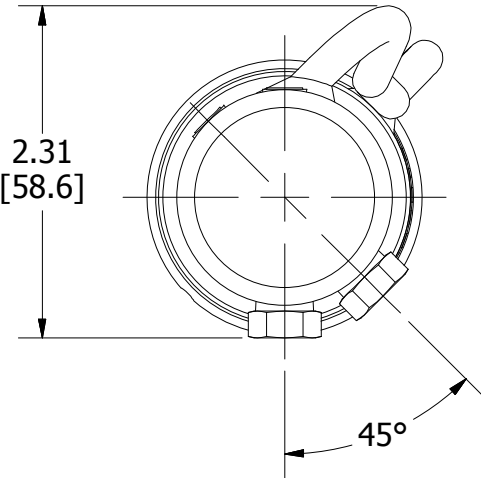
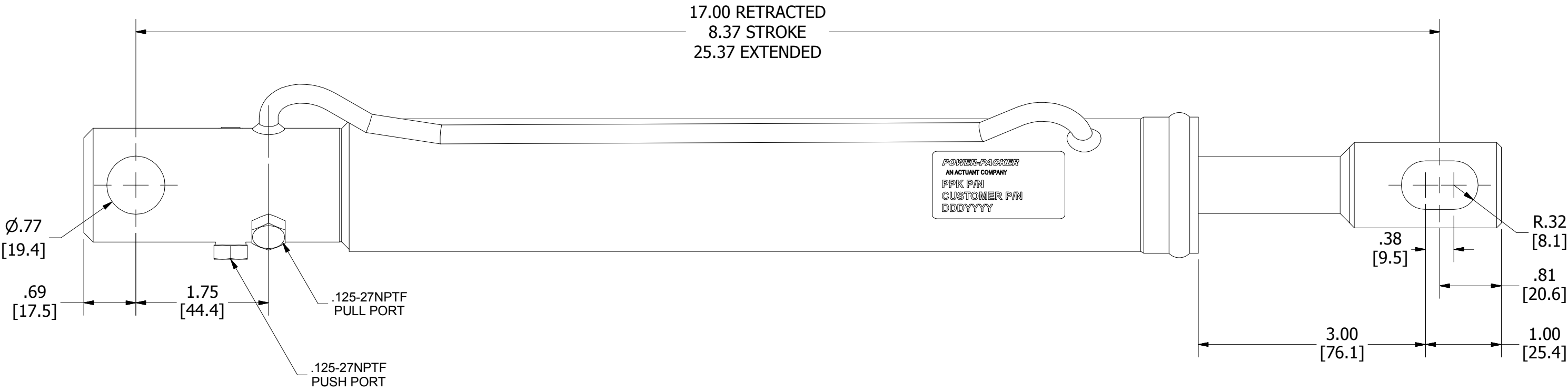
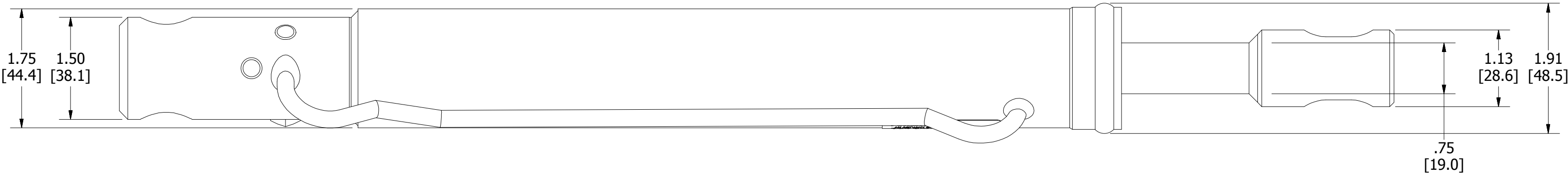


VELOCITY FUSE SETTING: 1.1TO 1.4 G.P.M
[4.2 -5.3 LITER/MIN.] (AT 70°F[21°C],
MIL-H-5606 FLUID OR EQUIV,VISCOSITY
RANGE OF 100-120 SSU)
MAXIMUM OPERATING PRESSURE - 5000
P.S.I [344.8 BAR]
RECOMMENDED OPERATING TEMP.
RANGE: -30° TO 130°F (-34° TO 54°C)
RECOMENDED FLUID IS MIL-H-5606
OR EQUIV.
EFFECTIVE AREAS
PUSH- 1.77 SQ.IN [1106.3MM SQ.IN]
PULL- 1.33 SQ.IN [831.3MM SQ.IN]
MAXIMUM FORCE
PUSH- 8850 LBS. [4013 KG]
PULL- 6650 LBS. [3015 KG]
CYLINDER TO BE FILLED WITH MIL-H-5606
(OR EQUIVALENT) FLUID.
PAINT SPECIFICATION: BLACK PER PP1199029
SERVICE KIT: KC1526

CAUTION:
THIS CYLINDER IS EQUIPPED WITH A VELOCITY
FUSE LOCKING DEVICE IN BOTH THE PULL AND
PUSH MODES. THE VELOCITY FUSE HAS BEEN
PRESET TO ACTUATE BETWEEN 1.1 GPM AND 1.4
GPM WHEN CYLINDER IS TESTED WITH
MIL-H-5606 OR EQUIVALENT WILL CHANGE THE
VELOCITY FUSE ACTUATION POINT AND MAY
RESULT IN IMPROPER OPERATION OF THE
CYLINDER.

REVISION HISTORY				
REV	DESCRIPTION	ECO	DATE	BY
0P	UPDATED DRAWING	12-030-01	11/11/13	KG
0Q	UPDATED CUSTOMER P/N	12-030-02	02/20/14	JJH



DESCRIPTION					REV	DATE	BY	ECO #	POWER-PACKER	
CYLINDER ASSEMBLY 1.50 BORE .75 ROD 8.37 STROKE NPT					0P	11/11/13	KG	12-030-01	AN Actuant COMPANY	
MATERIAL: Welded Steel Mild					0Q	02/20/14	JJH	12-030-02	PART NUMBER	
SIZE: C					DRAWN: LANCIONE					REV.
PROJECTION:					DATE: 11/16/2006					0Q
LEGEND:					CA15097302					
REVISION:					ESR: 12-030					
CRITICAL:					SCALE: 3/4					
TOTAL NO. OF USED					UNITS: INCHES [mm]					
TOLERANCES: ALL DIMENSIONS ARE REFERENCES UNLESS OTHERWISE SPECIFIED					SHEET 1 OF 1					
THIS DOCUMENT AND THE INFORMATION CONTAINED HEREIN IS THE SOLE PROPERTY OF ACTUANT AND ITS SUBSIDIARIES. IT CONTAINS PROPRIETARY INFORMATION, WHICH IS CONFIDENTIAL. ANY USE OR REPRODUCTION OF THIS DRAWING WITHOUT AUTHORIZATION FROM ACTUANT OR ITS SUBSIDIARY MAY WARRANT LEGAL ACTION AGAINST THE USER.										