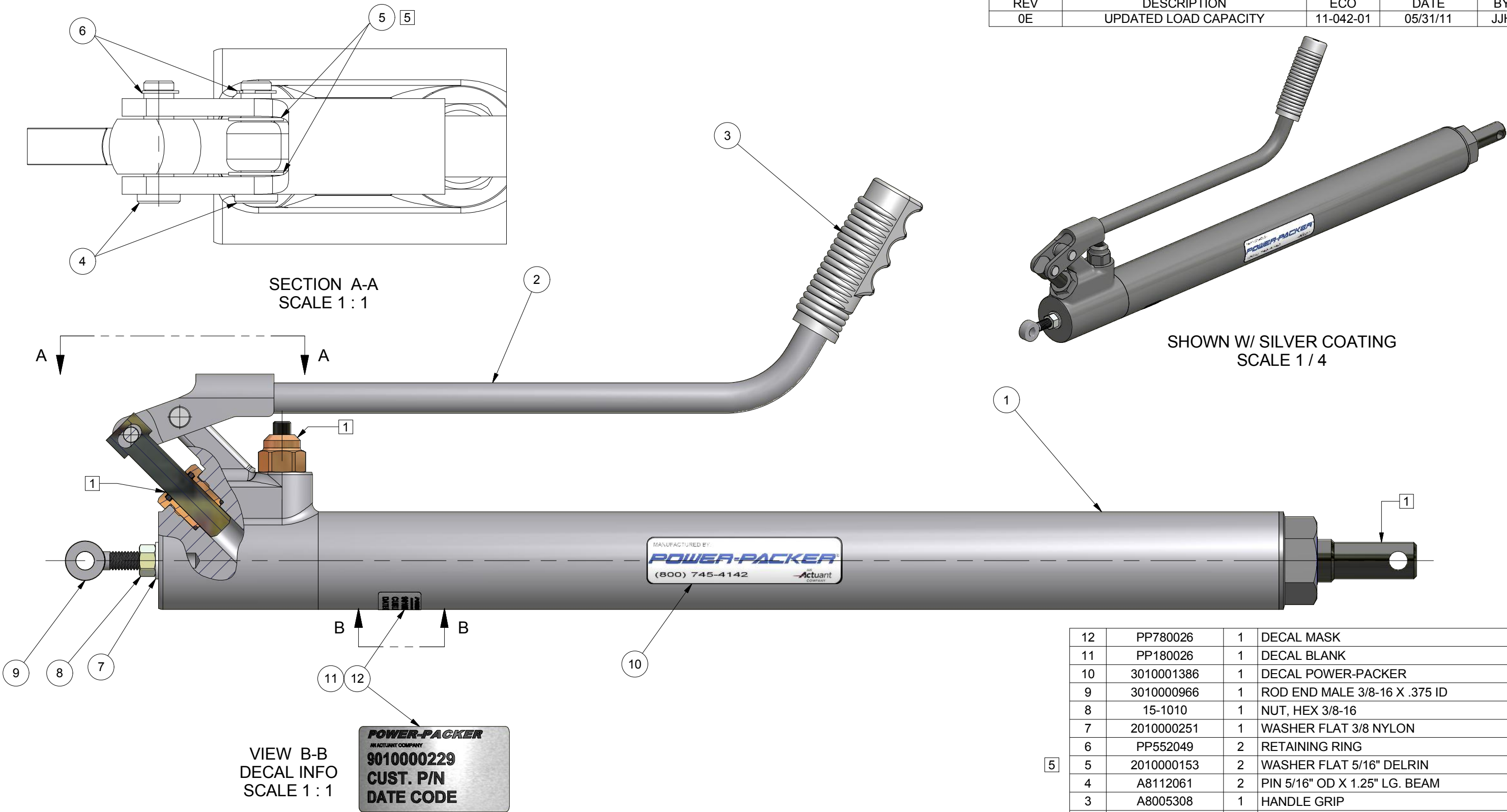


| REVISION HISTORY | | | | |
|------------------|-----------------------|-----------|----------|-----|
| REV | DESCRIPTION | ECO | DATE | BY |
| 0E | UPDATED LOAD CAPACITY | 11-042-01 | 05/31/11 | JJH |



NOTES:

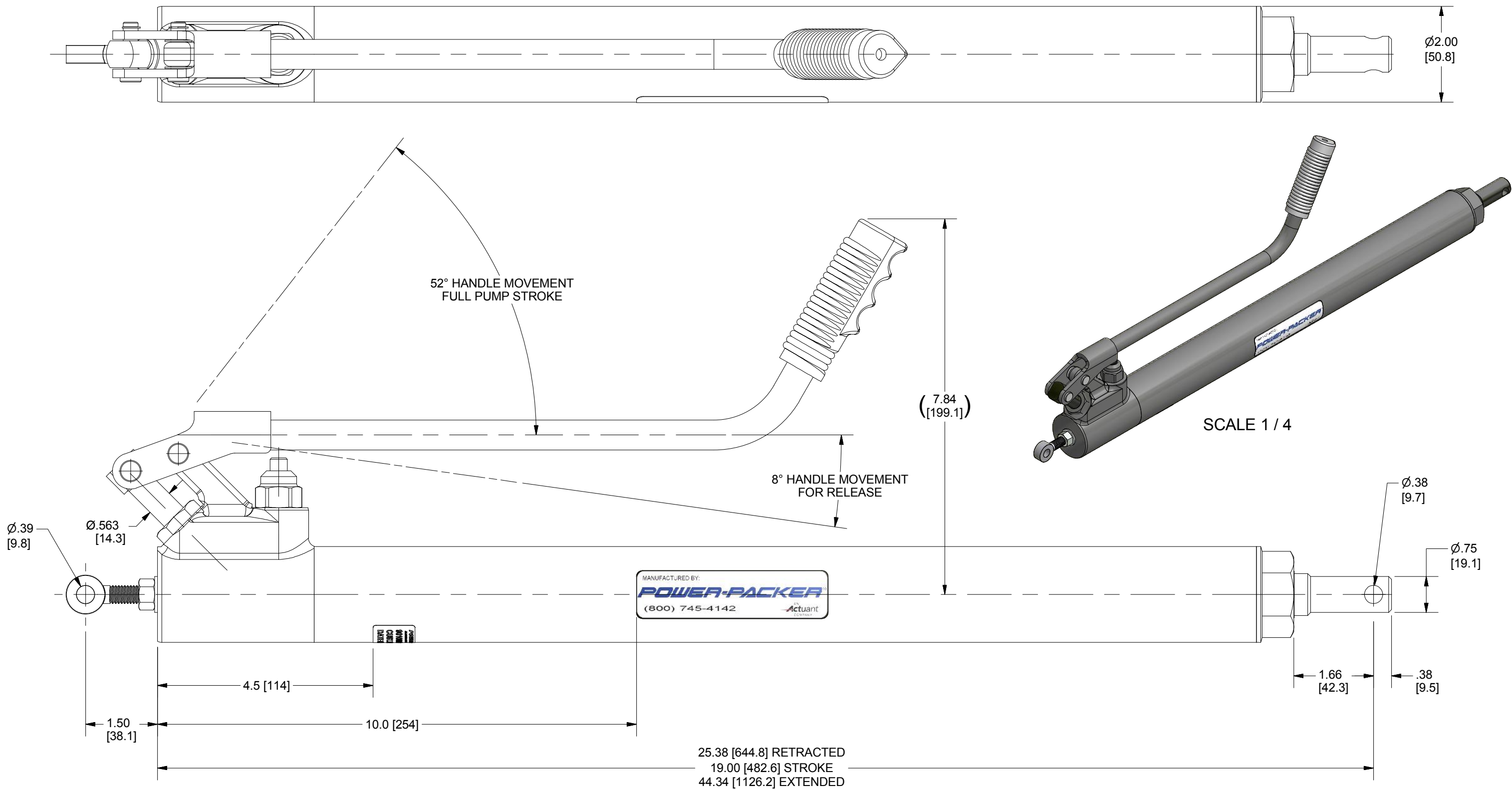
1. REMOVE COATING PLUGS & CAPS FROM 3510000033.
2. DO NOT CHIP/SCRATCH COATING DURING FINAL ASSEMBLY.
3. ITEM #11 DECAL INFO: P/N, CUST. P/N, DATE CODE.
4. APPLY DECAL LABELS AS SHOWN.
5. ACTUAL USAGE OF ITEM 5 (WASHER) MAY VARY. EXTRA WASHERS MAY BE NEEDED IF TOO LOOSE OR REMOVAL OF WASHERS MAY BE NEEDED IF TOO TIGHT.

UNLESS OTHERWISE SPECIFIED, ALL DIMENSIONS ARE NOMINAL AND MAY VARY DUE TO MANUFACTURING TOLERANCES AND ASSEMBLY STACK-UP.

| | | | | | | |
|--------------|--|----------------|--|--|---|-------------------|
| DO NOT SCALE | DESCRIPTION SELF CONTAINED JACK .566 PUMP 19 STK SILVER | | DRAWN: LANCIONE DATE: 2/6/2007 | | Actuant - POWER PACKER₂ | |
| | MATERIAL SEE BOM | | CHECKED: J. Wood DATE: 11/7/2007 | | | |
| | SIZE B | PROJECTION | TOLERANCES DECIMALS ANGLES X ± .1 ± 1° XX ± .03 XXX ± .015 BREAK ALL SHARP EDGES .005/.030 UNLESS OTHERWISE SPECIFIED | | UNITS: INCHES [mm] | |
| | | | | | SCALE: 1:2 | |
| | | | | | REF: SC02031919 | |
| | | SHEET 1 OF 2 | | LAST REVISED: 05/31/11 ECO: 11-042-01 | | |
| | | | | PART NUMBER 9010000229 | | REV. 0E |

| | | | |
|----|------------|---|---|
| 12 | PP780026 | 1 | DECAL MASK |
| 11 | PP180026 | 1 | DECAL BLANK |
| 10 | 3010001386 | 1 | DECAL POWER-PACKER |
| 9 | 3010000966 | 1 | ROD END MALE 3/8-16 X .375 ID |
| 8 | 15-1010 | 1 | NUT, HEX 3/8-16 |
| 7 | 2010000251 | 1 | WASHER FLAT 3/8 NYLON |
| 6 | PP552049 | 2 | RETAINING RING |
| 5 | 2010000153 | 2 | WASHER FLAT 5/16" DELRIN |
| 4 | A8112061 | 2 | PIN 5/16" OD X 1.25" LG. BEAM |
| 3 | A8005308 | 1 | HANDLE GRIP |
| 2 | 1010000838 | 1 | HANDLE WELD MEDICAL JACK SILVER |
| 1 | 3510000033 | 1 | SELF CONTAINED JACK .566 PUMP 19 STK SILVER - LESS HANDLE |


| ITEM | PART NUMBER | QTY | DESCRIPTION |
|------|-------------|-----|---|
| 12 | PP780026 | 1 | DECAL MASK |
| 11 | PP180026 | 1 | DECAL BLANK |
| 10 | 3010001386 | 1 | DECAL POWER-PACKER |
| 9 | 3010000966 | 1 | ROD END MALE 3/8-16 X .375 ID |
| 8 | 15-1010 | 1 | NUT, HEX 3/8-16 |
| 7 | 2010000251 | 1 | WASHER FLAT 3/8 NYLON |
| 6 | PP552049 | 2 | RETAINING RING |
| 5 | 2010000153 | 2 | WASHER FLAT 5/16" DELRIN |
| 4 | A8112061 | 2 | PIN 5/16" OD X 1.25" LG. BEAM |
| 3 | A8005308 | 1 | HANDLE GRIP |
| 2 | 1010000838 | 1 | HANDLE WELD MEDICAL JACK SILVER |
| 1 | 3510000033 | 1 | SELF CONTAINED JACK .566 PUMP 19 STK SILVER - LESS HANDLE |



SPECIFICATIONS:

| | | |
|----|--------------------------|------------------------|
| 0E | MAX. LOAD CAPACITY..... | 1000 lbs [453.6 kg] |
| | RAM EFFECTIVE AREA..... | 0.69 sq in [4.4 sq cm] |
| | PUMP PLUNGER DIA..... | 0.562 in [14.3 mm] |
| | DISPLACEMENT/STROKE..... | 0.22 cu in [3.6 cu cm] |

UNLESS OTHERWISE SPECIFIED, ALL DIMENSIONS ARE NOMINAL AND MAY VARY DUE TO MANUFACTURING TOLERANCES AND ASSEMBLY STACK-UP.

| | | | | | | | | |
|--------------|--|---|---|---|---|--------------------|------------------------|----------------|
| DO NOT SCALE | DESCRIPTION SELF CONTAINED JACK .566 PUMP 19 STK SILVER | | DRAWN: LANCIONE DATE: 2/6/2007 | | Actuant - POWER PACKER₂ | | | |
| | MATERIAL SEE BOM | | CHECKED: J. Wood DATE: 11/7/2007 | | | | | |
| | SIZE B | PROJECTION  | THIS DOCUMENT AND THE INFORMATION CONTAINED HEREIN IS THE SOLE PROPERTY OF ACTUANT AND ITS SUBSIDIARIES. IT CONTAINS PROPERTY INFORMATION, WHICH IS CONFIDENTIAL. ANY USE OR REPRODUCTION OF THIS DRAWING WITHOUT AUTHORIZATION FROM ACTUANT OR ITS SUBSIDIARY MAY WARRANT LEGAL ACTION AGAINST THE USER. | TOLERANCES DECIMALS ANGLES X ± .1 ± 1° XX ± .03 XXX ± .015 BREAK ALL SHARP EDGES .005/.030 UNLESS OTHERWISE SPECIFIED | | UNITS: INCHES [mm] | LAST REVISED: 05/31/11 | ECO: 11-042-01 |
| | | | | SCALE: 1:2 | PART NUMBER | | REV. | |
| | | | | REF: SC02031919 | 9010000229 | | | |
| | | SHEET 2 OF 2 | | | 0E | | | |